

## Recombinant Mouse Met Proto-oncogene, Fc-His

Cat. No. Met-1744M Lot. No. (See product label)

### SPECIFICATION

<b>Product Overview</b>	Recombinant Mouse HGFR (Met 1-Asn 929) - Linker peptide (DIEGRMD) - Human IgG1 (Pro 100 - Lys 330) - 6x His Tag was produced in <i>Sf 21 Insect Cell</i> .
<b>Species</b>	Mouse
<b>Source</b>	Sf21 Cells
<b>ProteinLength</b>	1-929 a.a.
<b>Description</b>	Hepatocyte growth factor receptor (HGFR), also known as c-Met, plays an important roles in angiogenesis and tumor growth. C-Met is a receptor tyrosine kinase expressed by epithelial cells of the brain, kidney, liver and other tissues. Binding of its ligand, Hepatocyte Growth Factor (HGF), triggers receptor autophosphorylation, and activation of several downstream effectors including the mitogen-activated protein kinases ERK-1 and ERK-2, and PLC- $\gamma$ . Activation of the c-Met signal transduction pathway leads to multiple cellular responses including cell motility, scattering, proliferation, survival and angiogenesis.
<b>Molecular Weight</b>	The predicted molecular weight of Recombinant Mouse HGF R is Mr 128 kDa.
<b>State Of Matter</b>	Lyophilized.
<b>Purity</b>	>95% by SDS Page and analyzed by silver stain.
<b>Endotoxin</b>	<0.1 EU/g as determined by the LAL method.

 Tel: 1-631-559-9269 1-516-512-3133

 Email: [info@creative-biomart.com](mailto:info@creative-biomart.com)  Fax: 1-631-938-8127

 45-1 Ramsey Road, Shirley, NY 11967, USA

**Biological Activity** Measured by its ability to bind rmHGF in a functional ELISA type binding assay with an estimated KD < 0.2 nM.

**Storage And Stability** This lyophilized protein is stable for six to twelve months when stored desiccated at -20°C to -70°C. After aseptic reconstitution, this protein may be stored at 2°C to 8°C for one month or at -20°C to -70°C in a manual defrost freezer. Avoid Repeated Freeze Thaw Cycles. See Product Insert for exact lot specific storage instructions.

## GENE INFORMATION

**Gene Name** [Met met proto-oncogene \[ Mus musculus \]](#)

**Synonyms** Met; met proto-oncogene; HGF; HGFR; Par4; c-Met; A1838057; HGF receptor OTTMUSP00000028498; OTTMUSP00000028499

**Gene ID** [17295](#)

**mRNA Refseq** [NM\\_008591](#)

**Protein Refseq** [NP\\_032617](#)

**UniProt ID** [P16056](#)

**Chromosome Location** 6 4.0 cM

**Pathway** Adherens junction; Axon guidance; Colorectal cancer; Cytokine-cytokine receptor interaction; Endocytosis; Focal adhesion; Melanoma; Pathways in cancer; Renal cell carcinoma

**Function** ATP binding; hepatocyte growth factor receptor activity; kinase activity; nucleotide

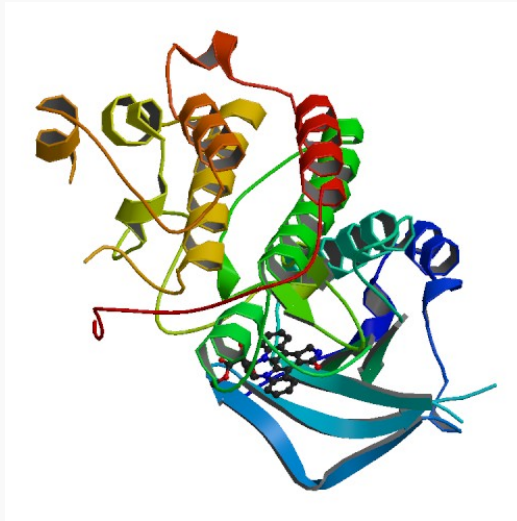
 Tel: 1-631-559-9269 1-516-512-3133

 Email: [info@creative-biomart.com](mailto:info@creative-biomart.com)  Fax: 1-631-938-8127

 45-1 Ramsey Road, Shirley, NY 11967, USA

binding; protein binding; protein kinase activity; protein tyrosine kinase activity; receptor activity; transferase activity; transmembrane receptor protein tyrosine kinase activity

**Crystallographic  
structure of MET.  
PDB rendering based  
on 1r0p.**



 Tel: 1-631-559-9269 1-516-512-3133

 Email: [info@creative-biomart.com](mailto:info@creative-biomart.com)  Fax: 1-631-938-8127

 45-1 Ramsey Road, Shirley, NY 11967, USA