

Recombinant Mouse Met Protein, His-tagged

Cat. No. Met-1773M Lot. No. (See product label)

SPECIFICATION

Product Overview	Recombinant Mouse Met Protein (Val496-Leu728) with N-His tag was expressed in E. coli.
Species	Mouse
Source	E.coli
ProteinLength	Val496-Leu728
Description	Enables hepatocyte growth factor-activated receptor activity. Involved in cell surface receptor signaling pathway; modulation of chemical synaptic transmission; and positive chemotaxis. Acts upstream of or within several processes, including animal organ development; regulation of cellular response to stress; and regulation of cytokine production. Located in membrane. Is expressed in several structures, including alimentary system; branchial arch; central nervous system; genitourinary system; and limb. Used to study Gilles de la Tourette syndrome; autism spectrum disorder; breast cancer; and gestational diabetes. Human ortholog(s) of this gene implicated in autistic disorder; autosomal recessive nonsyndromic deafness 97; carcinoma (multiple); and multiple myeloma. Orthologous to human MET (MET proto-oncogene, receptor tyrosine kinase).
Form	Freeze-dried powder
Molecular Mass	Predicted Molecular Mass: 29.6 kDa Accurate Molecular Mass: 32 kDa

 Tel: 1-631-559-9269 1-516-512-3133

 Email: info@creative-biomart.com  Fax: 1-631-938-8127

 45-1 Ramsey Road, Shirley, NY 11967, USA

Purity	> 90%
Applications	Positive Control; Immunogen; SDS-PAGE; WB.
Stability	The thermal stability is described by the loss rate. The loss rate was determined by accelerated thermal degradation test, that is, incubate the protein at 37 centigrade for 48h, and no obvious degradation and precipitation were observed. The loss rate is less than 5% within the expiration date under appropriate storage condition.
Storage	Avoid repeated freeze/thaw cycles. Store at 2-8 centigrade for one month. Aliquot and store at -80 centigrade for 12 months.
Storage Buffer	20mM Tris, 150mM NaCl, pH8.0, containing 1mM EDTA, 1mM DTT, 0.01% SKL, 5% Trehalose and Proclin300.
Reconstitution	Reconstitute in 20mM Tris, 150mM NaCl (pH8.0) to a concentration of 0.1-1.0 mg/mL. Do not vortex.

GENE INFORMATION

Gene Name	Met met proto-oncogene [Mus musculus (house mouse)]
Official Symbol	Met
Synonyms	MET; met proto-oncogene; hepatocyte growth factor receptor; SF receptor; HGF receptor; HGF/SF receptor; proto-oncogene c-Met; scatter factor receptor; tyrosine-protein kinase Met; met proto-oncogene tyrosine kinase; HGF; HGFR; Par4; c-Met; AI838057;
Gene ID	17295

 Tel: 1-631-559-9269 1-516-512-3133

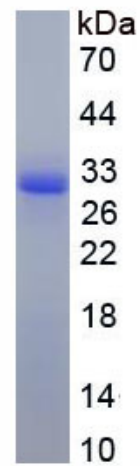
 Email: info@creative-biomart.com  Fax: 1-631-938-8127

 45-1 Ramsey Road, Shirley, NY 11967, USA

mRNA Refseq [NM_008591](#)

Protein Refseq [NP_032617](#)

UniProt ID [F8VQL0](#)



 Tel: 1-631-559-9269 1-516-512-3133

 Email: info@creative-biomart.com  Fax: 1-631-938-8127

 45-1 Ramsey Road, Shirley, NY 11967, USA