

Active Recombinant Rat Met Protein

Cat. No. Met-4417R **Lot. No.** (See product label)

SPECIFICATION

Product Overview	Rat Met (X96786, 958 a.a. - end) partial recombinant protein expressed in Sf9 cells.
Species	Rat
Source	Insect Cells
ProteinLength	958-end a.a.
Description	MET is a single pass tyrosine kinase receptor essential for embryonic development, organogenesis and wound healing. Hepatocyte growth factor/Scatter Factor (HGF/SF) and its splicing isoform (NK1, NK2) are the only known ligands of the MET receptor. MET is normally expressed by cells of epithelial origin, while expression of HGF/SF is restricted to cells of mesenchymal origin. When HGF/SF binds its cognate receptor MET it induces its dimerization through a not yet completely understood mechanism leading to its activation.
Form	Liquid
Bio-activity	The specific activity of Met was determined to be 46 nmol/min/mg.
Molecular Mass	74.0 kDa
Purity	>= 90% by SDS-PAGE
Applications	Functional Study

 Tel: 1-631-559-9269 1-516-512-3133

 Email: info@creative-biomart.com  Fax: 1-631-938-8127

 45-1 Ramsey Road, Shirley, NY 11967, USA

SDS-PAGE

Storage Store at -80 centigrade. Aliquot to avoid repeated freezing and thawing.

Storage Buffer In 50 mM Tris-HCl, 150 mM NaCl, pH 7.5 (0.25 mM DTT, 0.1 mM EGTA, 0.1 mM EDTA, 0.1 mM PMSF, 25% glycerol)

GENE INFORMATION

Gene Name [Met met proto-oncogene \[Rattus norvegicus \]](#)

Official Symbol [Met](#)

Synonyms MET; met proto-oncogene; hepatocyte growth factor receptor; c-Met; SF receptor; HGF receptor; HGF/SF receptor; proto-oncogene c-Met; scatter factor receptor; tyrosine-protein kinase Met; met proto-oncogene tyrosine kinase; Hgfr;

Gene ID [24553](#)

mRNA Refseq [NM_031517](#)

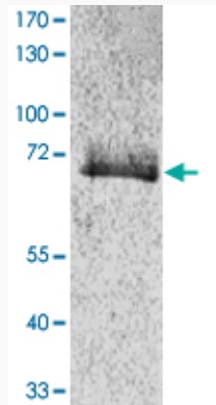
Protein Refseq [NP_113705](#)

 Tel: 1-631-559-9269 1-516-512-3133

 Email: info@creative-biomart.com  Fax: 1-631-938-8127

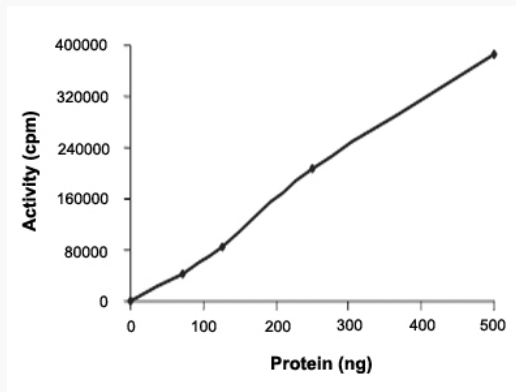
 45-1 Ramsey Road, Shirley, NY 11967, USA

**Quality Control
Testing**



SDS-PAGE Result

**Result of activity
analysis**



 Tel: 1-631-559-9269 1-516-512-3133

 Email: info@creative-biomart.com  Fax: 1-631-938-8127

 45-1 Ramsey Road, Shirley, NY 11967, USA