

## Active Recombinant Mouse Met Proto-Oncogene, Fc-tagged

Cat. No. Met-730M Lot. No. (See product label)

### SPECIFICATION

<b>Product Overview</b>	Recombinant Mouse Metprotein was expressed in Murine myeloma cell line with the Fc part of MouseIgG2A Glu98-Lys330 (C-terminus) and Met1-Asn929 (N-terminus).
<b>Species</b>	Mouse
<b>Source</b>	Mammalian Cells
<b>ProteinLength</b>	98-330;1-929 a.a.
<b>Description</b>	Met is aglycosylated receptor tyrosine kinase that plays a central role in epithelialmorphogenesis and cancer development. Met is synthesized as a single chainprecursor which undergoes cotranslational proteolytic cleavage. This generatesa mature Met that is a disulfide-linked dimer composed of a 50 kDaextracellular $\alpha$ chain and a 145 kDa transmembrane $\beta$ chain.
<b>Form</b>	Lyophilized from a0.2 $\mu$ m filtered solution in PBS.
<b>N-terminalSequence</b>	Glu25 & Ser307
<b>Molecular Weight</b>	96 &32 kDa
<b>Activity</b>	Measuredby its ability to bind recombinant mouse Met in a functional ELISA with anestimated KD < 0.2 nM.
<b>Endotoxin Level</b>	<1.0 EUper 1 $\mu$ g of the protein by the LAL method.

 Tel: 1-631-559-9269 1-516-512-3133

 Email: [info@creative-biomart.com](mailto:info@creative-biomart.com)  Fax: 1-631-938-8127

 45-1 Ramsey Road, Shirley, NY 11967, USA

<b>SDS-PAGE</b>	110-120kDa & 40-43 kDa, reducing conditions.
<b>Purity</b>	>95%,by SDS-PAGE under reducing conditions and visualized by silver stain.
<b>Reconstitution</b>	200 µg/ mLin PBS
<b>Storage</b>	Use a manualdefrost freezer and avoid repeated freeze-thaw cycles. 12 months from date ofreceipt, -20 to -70°C as supplied. 1 month, 2 to 8 °C under sterile conditionsafter reconstitution. 3 months, -20 to -70°C under sterile conditions after reconstitution.

## GENE INFORMATION

<b>Gene Name</b>	<a href="#">Met met proto-oncogene [ Musmusculus ]</a>
<b>Official Symbol</b>	<a href="#">Met</a>
<b>Synonyms</b>	Met; metproto-oncogene; HGF; HGFR; Par4; c-Met; A1838057; hepatocyte growth factorreceptor; SF receptor; HGF receptor; HGF/SF receptor; proto-oncogene c-Met;scatter factor receptor; tyrosine-protein kinase Met; met proto-oncogenetyrosine kinase; EC 2.7.10.1; Met protein
<b>Gene ID</b>	<a href="#">17295</a>
<b>mRNA Refseq</b>	<a href="#">NM_008591</a>
<b>Protein Refseq</b>	<a href="#">NP_032617</a>
<b>UniProt ID</b>	<a href="#">P16056</a>
<b>Chromosome</b>	6 A2; 6 4.0 cM

 Tel: 1-631-559-9269 1-516-512-3133

 Email: [info@creative-biomart.com](mailto:info@creative-biomart.com)  Fax: 1-631-938-8127

 45-1 Ramsey Road, Shirley, NY 11967, USA

**Location**

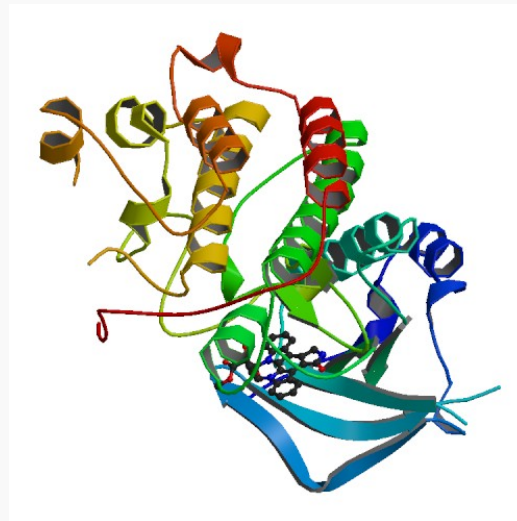
**Pathway**

Adherens junction;Alpha6-Beta4 Integrin Signaling Pathway; Axon guidance; Bacterial invasion of epithelial cells; Cytokine-cytokine receptor interaction; Developmental Biology; Endocytosis; Focal Adhesion; Focal adhesion; Malaria; Melanoma; Pathways in cancer; Renal cell carcinoma; Sema4D in semaphorin signaling; Semaphorin interactions

**Function**

ATP binding; beta-catenin binding; hepatocyte growth factor-activated receptor activity; kinase activity; nucleotide binding; phosphatidylinositol 3-kinase binding; phospholipase binding; protein complex binding; protein heterodimerization activity; protein kinase activity; protein tyrosine kinase activity; receptor activity; transferase activity

**Crystallographic structure of MET. PDB rendering based on 1r0p.**



 Tel: 1-631-559-9269 1-516-512-3133

 Email: [info@creative-biomart.com](mailto:info@creative-biomart.com)  Fax: 1-631-938-8127

 45-1 Ramsey Road, Shirley, NY 11967, USA