

Recombinant Mouse Metrnl Protein (Glu67-Glu311), N-His tagged

Cat. No. Metrnl-6754M **Lot. No.** (See product label)

SPECIFICATION

Product Overview	Recombinant mouse Metrnl (Glu67-Glu311) fused with the N-His tag was expressed in E. coli.
Species	Mouse
Source	E.coli
ProteinLength	Glu67-Glu311
Description	Enables hormone activity. Involved in several processes, including brown fat cell differentiation; energy homeostasis; and positive regulation of brown fat cell differentiation. Located in extracellular space. Is expressed in central nervous system; sensory organ; skeleton; and vibrissa. Orthologous to human METRNL (meteorin like, glial cell differentiation regulator).
Form	Lyophilized powder/frozen liquid
Molecular Mass	29.8 kDa
Purity	> 90 % as determined by SDS-PAGE
Notes	For research use only.
Storage	Use a manual defrost freezer and avoid repeated freeze thaw cycles. Store at 2 to 8

 Tel: 1-631-559-9269 1-516-512-3133

 Email: info@creative-biomart.com  Fax: 1-631-938-8127

 45-1 Ramsey Road, Shirley, NY 11967, USA

centigrade for one week. Store at -20 to -80 centigrade for twelve months from the date of receipt.

Storage Buffer Lyophilized from PBS, pH 7.4, 1 mM EDTA, 4 % trehalose, 1 % mannitol.

Reconstitution Reconstitute in sterile water for a stock solution.

Shipping They are shipped out with dry ice/blue ice unless customers require otherwise.

GENE INFORMATION

Gene Name [Metrn1 meteorin, glial cell differentiation regulator-like \[Mus musculus \(house mouse\) \]](#)

Official Symbol [Metrn1](#)

Synonyms [Metrn1](#); meteorin, glial cell differentiation regulator-like; 9430048M07Rik; meteorin-like protein; cometin; subfatin

Gene ID [210029](#)

mRNA Refseq [NM_144797](#)

Protein Refseq [NP_659046](#)

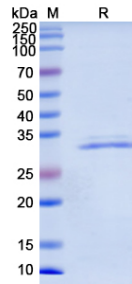
UniProt ID [Q8VE43](#)

 Tel: 1-631-559-9269 1-516-512-3133

 Email: info@creative-biomart.com  Fax: 1-631-938-8127

 45-1 Ramsey Road, Shirley, NY 11967, USA

SDS-PAGE



 Tel: 1-631-559-9269 1-516-512-3133

 Email: info@creative-biomart.com  Fax: 1-631-938-8127

 45-1 Ramsey Road, Shirley, NY 11967, USA