

Recombinant Mouse Mfge8 protein, His-tagged

Cat. No. Mfge8-408M Lot. No. (See product label)

SPECIFICATION

Product Overview	Recombinant Mouse Mfge8 protein(P21956-1)(Ala23-Cys463) is expressed from HEK293 with His tag at the N-Terminus.
Species	Mouse
Source	HEK293
ProteinLength	Ala23-Cys463
Form	Lyophilized from 0.22µm filtered solution in PBS (pH 7.4). Normally 8% trehalose is added as protectant before lyophilization.
Molecular Mass	The protein has a predicted MW of 50.1 kDa. Due to glycosylation, the protein migrates to 60-70 kDa based on Tris-Bis PAGE result.
Endotoxin	Less than 1EU per µg by the LAL method.
Purity	> 95% as determined by Tris-Bis PAGE
Storage	-20 to -80°C for 12 months as supplied from date of receipt. -80°C for 3-6 months after reconstitution. 2-8°C for 2-7 days after reconstitution. Recommend to aliquot the protein into smaller quantities for optimal storage. Please minimize freeze-thaw cycles.
Reconstitution	Centrifuge the tube before opening. Reconstituting to a concentration more than 100

 Tel: 1-631-559-9269 1-516-512-3133

 Email: info@creative-biomart.com  Fax: 1-631-938-8127

 45-1 Ramsey Road, Shirley, NY 11967, USA



µg/ml is recommended. Dissolve the lyophilized protein in distilled water.

GENE INFORMATION

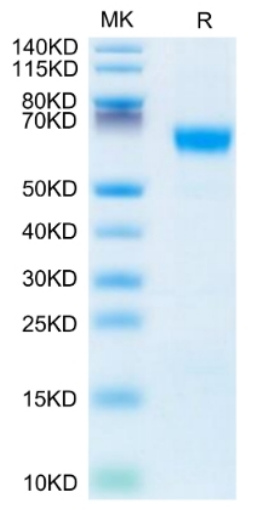
Gene Name	Mfge8 milk fat globule-EGF factor 8 protein [Mus musculus (house mouse)]
Official Symbol	Mfge8
Synonyms	Mfge8; milk fat globule-EGF factor 8 protein; P47; MP47; Mfgm; SED1; MFG-E8; AA408458; AI325141; lactadherin; lactadherin; EGF/factor VIII; milk fat globule glycoprotein; sperm surface protein SP47
Gene ID	17304
mRNA Refseq	NM_001045489
Protein Refseq	NP_001038954
UniProt ID	P21956

 Tel: 1-631-559-9269 1-516-512-3133

 Email: info@creative-biomart.com  Fax: 1-631-938-8127

 45-1 Ramsey Road, Shirley, NY 11967, USA

Tris-Bis PAGE



 Tel: 1-631-559-9269 1-516-512-3133

 Email: info@creative-biomart.com  Fax: 1-631-938-8127

 45-1 Ramsey Road, Shirley, NY 11967, USA