

Recombinant Rat Mfge8 protein(23-427aa), His-tagged

Cat. No. Mfge8-669R Lot. No. (See product label)

SPECIFICATION

Product Overview	Recombinant Rat Mfge8 protein(P70490)(23-427aa), fused with N-terminal His tag, was expressed in E.coli.
Species	Rat
Source	E.coli
ProteinLength	23-427aa
Form	If the delivery form is liquid, the default storage buffer is Tris/PBS-based buffer, 5%-50% glycerol. If the delivery form is lyophilized powder, the buffer before lyophilization is Tris/PBS-based buffer, 6% Trehalose, pH 8.0.
Molecular Mass	51.1 kDa
Purity	Greater than 90% as determined by SDS-PAGE.
Storage	Store at -20°C/-80°C upon receipt, aliquoting is necessary for mutiple use. Avoid repeated freeze-thaw cycles.
Reconstitution	We recommend that this vial be briefly centrifuged prior to opening to bring the contents to the bottom. Please reconstitute protein in deionized sterile water to a concentration of 0.1-1.0 mg/mL. We recommend to add 5-50% of glycerol (final concentration) and aliquot for long-term storage at -20°C/-80°C.

 Tel: 1-631-559-9269 1-516-512-3133

 Email: info@creative-biomart.com  Fax: 1-631-938-8127

 45-1 Ramsey Road, Shirley, NY 11967, USA

AA Sequence

ASGDFCDSSLCLNGGTCLMGQDNDIYCLCPEGFTGLVCNETEKGPCSPNPCFHDA
 KCLVTEDTQRGDIFTEYICQCPVGYSGIHCELGCSTKLGLEGGAIADSQISASSVYMG
 FMGLQRWGPPEARLYRTGIVNAWTASSYDSKPWIQVDFLRKMRVSGVMTQGASRA
 GRAEYLKTFKVAAYSLDGRRFEFIQDESGTDKEFMGNQDNNSLKINMFNPTLEAQYI
 RLYPVSCHRGCFLRFELLGCELHGCSEPLGLKNNTIPDSQITASSSYKTWNLRAFGW
 YPHLGRLDNQGKINAWTAQSNSAKEWLQVDLGTQKKVTGIITQGARDFGHIQYVAS
 YKVAHSDDGVQWTVYEEQGTSKVFQGNLDNNSHKKNIFEKPFMARYVRVLPLSWH
 NRITLRLELLGC

GENE INFORMATION

Gene Name [Mfge8 milk fat globule-EGF factor 8 protein \[Rattus norvegicus \]](#)

Official Symbol [Mfge8](#)

Synonyms

MFGE8; milk fat globule-EGF factor 8 protein; lactadherin; MFGM; SED1; MFG-E8;
 O-acetyl GD3 ganglioside synthase; O-acetyl disialoganglioside synthase; O-
 acetyltransferase milk fat globule membrane protein; O-acetyltransferase Milk fat
 globule membrane protein; AGS; MFGME8; OAcGD3S; MFGMP-E8;

Gene ID [25277](#)

mRNA Refseq [NM_001040186](#)

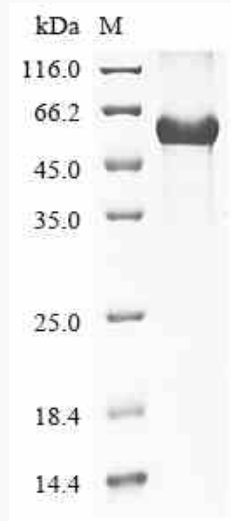
Protein Refseq [NP_001035276](#)

 Tel: 1-631-559-9269 1-516-512-3133

 Email: info@creative-biomart.com  Fax: 1-631-938-8127

 45-1 Ramsey Road, Shirley, NY 11967, USA

SDS-PAGE



 Tel: 1-631-559-9269 1-516-512-3133

 Email: info@creative-biomart.com  Fax: 1-631-938-8127

 45-1 Ramsey Road, Shirley, NY 11967, USA