

## Recombinant Mouse Mfge8 protein, His-tagged

Cat. No. Mfge8-6768M    Lot. No. (See product label)

### SPECIFICATION

<b>Product Overview</b>	Recombinant Mouse Mfge8 aa. (Ile159~Ser417 (Accession # P21956)) fused with N-terminal His tag was produced in E. coli cells.
<b>Species</b>	Mouse
<b>Source</b>	E.coli
<b>ProteinLength</b>	Ile159~Ser417
<b>Form</b>	Freeze-dried powder
<b>Molecular Mass</b>	Predicted Molecular Mass: 30.6kDa.
<b>Endotoxin</b>	<1.0EU per 1ug (determined by the LAL method)
<b>Purity</b>	>95%
<b>Characteristic</b>	The isoelectric point is 8.3.
<b>Applications</b>	SDS-PAGE; WB; ELISA; IP.
<b>Stability</b>	The thermal stability is described by the loss rate of the target protein. The loss rate was determined by accelerated thermal degradation test, that is, incubate the protein at 37°C for 48h, and no obvious degradation and precipitation were observed. (Referring from China Biological Products Standard, which was calculated by the

 Tel: 1-631-559-9269    1-516-512-3133

 Email: [info@creative-biomart.com](mailto:info@creative-biomart.com)     Fax: 1-631-938-8127

 45-1 Ramsey Road, Shirley, NY 11967, USA

Arrhenius equation.) The loss of this protein is less than 5% within the expiration date under appropriate storage condition.

**Storage**

Avoid repeated freeze/thaw cycles. Store at 2-8°C for one month. Aliquot and store at -80°C for 12 months.

**Storage buffer**

Supplied as lyophilized form in PBS, pH7.4, containing 5% sucrose, 0.01% sarcosyl.

**Reconstitution**

Reconstitute in sterile PBS, pH7.2-pH7.4.

## GENE INFORMATION

**Gene Name**

[Mfge8 milk fat globule-EGF factor 8 protein \[ Mus musculus \(house mouse\) \]](#)

**Official Symbol**

[Mfge8](#)

**Synonyms**

P47; MP47; Mfgm; SED1; MFG-E8; AA408458; AI325141; lactadherin; EGF/factor VIII; milk fat globule glycoprotein; sperm surface protein SP47; lactadherin

**Gene ID**

[17304](#)

**mRNA Refseq**

[NM\\_001045489.1](#)

**Protein Refseq**

[NP\\_001038954.1](#)

**UniProt ID**

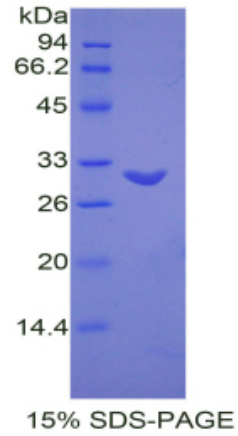
[P21956](#)

 Tel: 1-631-559-9269 1-516-512-3133

 Email: [info@creative-biomart.com](mailto:info@creative-biomart.com)  Fax: 1-631-938-8127

 45-1 Ramsey Road, Shirley, NY 11967, USA

**SDS-PAGE**



 Tel: 1-631-559-9269 1-516-512-3133

 Email: [info@creative-biomart.com](mailto:info@creative-biomart.com)  Fax: 1-631-938-8127

 45-1 Ramsey Road, Shirley, NY 11967, USA