

Recombinant Rat Mfge8 protein, His & GST-tagged

Cat. No. Mfge8-6769R Lot. No. (See product label)

SPECIFICATION

Product Overview	Recombinant Rat Mfge8 aa. (Cys73~Arg421 (Accession # P70490)) fused with N-terminal His & GST tag was produced in E. coli cells.
Species	Rat
Source	E.coli
ProteinLength	Cys73~Arg421
Form	Freeze-dried powder
Molecular Mass	Predicted Molecular Mass: 69.4kDa.
Endotoxin	<1.0EU per 1ug (determined by the LAL method)
Purity	>90%
Characteristic	The isoelectric point is 8.6.
Applications	SDS-PAGE; WB; ELISA; IP.
Stability	The thermal stability is described by the loss rate of the target protein. The loss rate was determined by accelerated thermal degradation test, that is, incubate the protein at 37°C for 48h, and no obvious degradation and precipitation were observed. (Referring from China Biological Products Standard, which was calculated by the

 Tel: 1-631-559-9269 1-516-512-3133

 Email: info@creative-biomart.com  Fax: 1-631-938-8127

 45-1 Ramsey Road, Shirley, NY 11967, USA

Arrhenius equation.) The loss of this protein is less than 5% within the expiration date under appropriate storage condition.

Storage

Avoid repeated freeze/thaw cycles. Store at 2-8°C for one month. Aliquot and store at -80°C for 12 months.

Storage buffer

Supplied as lyophilized form in PBS, pH7.4, containing 5% trehalose, 0.01% sarcosyl.

Reconstitution

Reconstitute in sterile PBS, pH7.2-pH7.4.

GENE INFORMATION

Gene Name

Mfge8 milk fat globule-EGF factor 8 protein [*Rattus norvegicus* (Norway rat)]

Official Symbol

Mfge8

Synonyms

AGS; MFGME8; OAcGD3S; MFGMP-E8; MFG-E8; MFGM; O-acetyl GD3 ganglioside synthase; O-acetyl disialoganglioside synthase; O-acetyltransferase Milk fat globule membrane protein; O-acetyltransferase milk fat globule membrane protein; SED1; lactadherin

Gene ID

25277

mRNA Refseq

NM_001040186.2

Protein Refseq

NP_001035276.1

UniProt ID

P70490

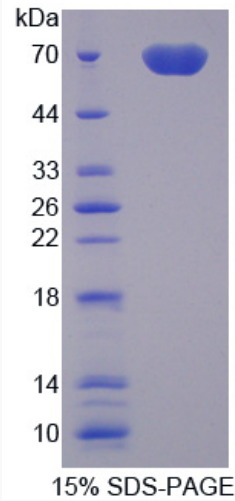
 Tel: 1-631-559-9269 1-516-512-3133

 Email: info@creative-biomart.com  Fax: 1-631-938-8127

 45-1 Ramsey Road, Shirley, NY 11967, USA



SDS-PAGE



Tel: 1-631-559-9269 1-516-512-3133

Email: info@creative-biomart.com Fax: 1-631-938-8127

45-1 Ramsey Road, Shirley, NY 11967, USA