

Recombinant Mouse Mgp protein, His & S-tagged

Cat. No. Mgp-7011M Lot. No. (See product label)

SPECIFICATION

Product Overview	Recombinant Mouse Mgp aa. (Tyr20~Tyr104 (Accession # P19788)) fused with N-terminal His & S tag was produced in E. coli cells.
Species	Mouse
Source	E.coli
ProteinLength	Tyr20~Tyr104
Description	This gene encodes a member of the osteocalcin/matrix Gla family of proteins. The encoded vitamin K-dependent protein is secreted by chondrocytes and vascular smooth muscle cells, and functions as a physiological inhibitor of ectopic tissue calcification. This protein also inhibits angiogenesis. Mice lacking a functional copy of this gene exhibit impaired differentiation of endothelial cells, reduced stature, and calcification and rupture of the vasculature leading to premature death.
Form	Freeze-dried powder
Molecular Mass	20kDa as determined by SDS-PAGE reducing conditions.
Endotoxin	<1.0EU per 1ug (determined by the LAL method)
Purity	>95%
Characteristic	The isoelectric point is 8.5.

 Tel: 1-631-559-9269 1-516-512-3133

 Email: info@creative-biomart.com  Fax: 1-631-938-8127

 45-1 Ramsey Road, Shirley, NY 11967, USA

Applications	SDS-PAGE; WB; ELISA; IP
Stability	The thermal stability is described by the loss rate. The loss rate was determined by accelerated thermal degradation test, that is, incubate the protein at 37°C for 48h, and no obvious degradation and precipitation were observed. The loss rate is less than 5% within the expiration date under appropriate storage condition.
Storage	Avoid repeated freeze/thaw cycles. Store at 2-8°C for one month. Aliquot and store at -80°C for 12 months.
Storage buffer	Supplied as lyophilized form in 20mM Tris, 150mM NaCl, pH8.0, containing 1mM EDTA, 1mM DTT, 0.01% sarcosyl, 5% trehalose, and preservative.
Reconstitution	Reconstitute in ddH ₂ O.

GENE INFORMATION

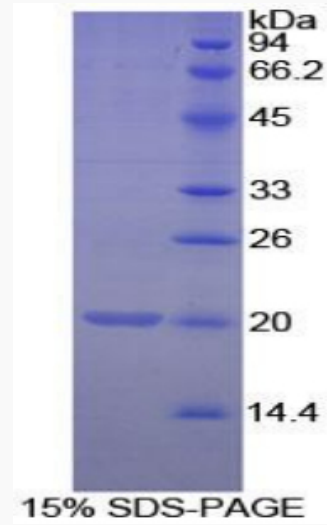
Gene Name	Mgp matrix Gla protein [<i>Mus musculus</i> (house mouse)]
Official Symbol	Mgp
Synonyms	Mgp; matrix Gla protein; Mglap; matrix gamma-carboxyglutamate (gla) protein
Gene ID	17313
mRNA Refseq	NM_008597.4
Protein Refseq	NP_032623.1
UniProt ID	P19788

 Tel: 1-631-559-9269 1-516-512-3133

 Email: info@creative-biomart.com  Fax: 1-631-938-8127

 45-1 Ramsey Road, Shirley, NY 11967, USA

SDS-PAGE



 Tel: 1-631-559-9269 1-516-512-3133

 Email: info@creative-biomart.com  Fax: 1-631-938-8127

 45-1 Ramsey Road, Shirley, NY 11967, USA