

Recombinant Rat Mgp protein, His-tagged

Cat. No. Mgp-7013R Lot. No. (See product label)

SPECIFICATION

| | |
|-------------------------|---|
| Product Overview | Recombinant Rat Mgp aa. (Tyr20~Lys103) fused with N-terminal His tag was produced in E. coli cells. |
| Species | Rat |
| Source | E.coli |
| ProteinLength | Tyr20~Lys103 |
| Description | A vitamin K-dependent protein; part of the bone matrix. |
| Form | Freeze-dried powder |
| Molecular Mass | 19kDa as determined by SDS-PAGE reducing conditions. |
| Endotoxin | <1.0EU per 1ug (determined by the LAL method) |
| Purity | >98% |
| Characteristic | The isoelectric point is 6.8. |
| Applications | SDS-PAGE; WB; ELISA; IP; CoIP; Purification; Amine Reactive Labeling |
| Stability | The thermal stability is described by the loss rate. The loss rate was determined by accelerated thermal degradation test, that is, incubate the protein at 37°C for 48h, |

 Tel: 1-631-559-9269 1-516-512-3133

 Email: info@creative-biomart.com  Fax: 1-631-938-8127

 45-1 Ramsey Road, Shirley, NY 11967, USA

and no obvious degradation and precipitation were observed. The loss rate is less than 5% within the expiration date under appropriate storage condition.

Storage

Avoid repeated freeze/thaw cycles. Store at 2-8°C for one month. Aliquot and store at -80°C for 12 months.

Concentration

200ug/mL

Storage buffer

20mM Tris, 150mM NaCl, pH8.0, containing 1mM EDTA, 1mM DTT, 0.01% sarcosyl, 5%Trehalose and Proclin300.

Reconstitution

Reconstitute in 20mM Tris, 150mM NaCl (pH8.0) to a concentration of 0.1-1.0 mg/mL. Do not vortex.

GENE INFORMATION

Gene Name

Mgp matrix Gla protein [*Rattus norvegicus* (Norway rat)]

Official Symbol

Mgp

Synonyms

Mgp; matrix Gla protein; Mglap

Gene ID

25333

mRNA Refseq

NM_012862.1

Protein Refseq

NP_036994.1

UniProt ID

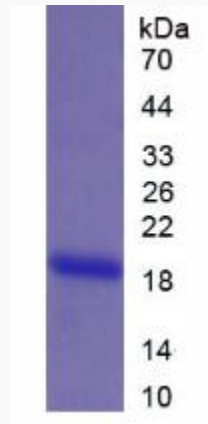
P08494

 Tel: 1-631-559-9269 1-516-512-3133

 Email: info@creative-biomart.com  Fax: 1-631-938-8127

 45-1 Ramsey Road, Shirley, NY 11967, USA

SDS-PAGE



 Tel: 1-631-559-9269 1-516-512-3133

 Email: info@creative-biomart.com  Fax: 1-631-938-8127

 45-1 Ramsey Road, Shirley, NY 11967, USA