

## Recombinant Rat Mib2 protein, His & T7-tagged

Cat. No. Mib2-1886R    Lot. No. (See product label)

### SPECIFICATION

<b>Product Overview</b>	Recombinant Rat Mib2 aa. (Glu407~Lys663 (Accession # NM_001005901.2)) fused with N-terminal His & T7 tag was produced in E. coli cells.
<b>Species</b>	Rat
<b>Source</b>	E.coli
<b>ProteinLength</b>	Glu407~Lys663
<b>Form</b>	Freeze-dried powder
<b>Molecular Mass</b>	Predicted Molecular Mass: 31.4kDa
<b>Endotoxin</b>	<1.0EU per 1ug (determined by the LAL method)
<b>Purity</b>	>95%
<b>Applications</b>	SDS-PAGE; WB; ELISA; IP.
<b>Stability</b>	The thermal stability is described by the loss rate. The loss rate was determined by accelerated thermal degradation test, that is, incubate the protein at 37°C for 48h, and no obvious degradation and precipitation were observed. The loss rate is less than 5% within the expiration date under appropriate storage condition.
<b>Storage</b>	Avoid repeated freeze/thaw cycles. Store at 2-8°C for one month. Aliquot and store at

 Tel: 1-631-559-9269    1-516-512-3133

 Email: [info@creative-biomart.com](mailto:info@creative-biomart.com)     Fax: 1-631-938-8127

 45-1 Ramsey Road, Shirley, NY 11967, USA

-80°C for 12 months.

**Storage buffer** Supplied as lyophilized form in PBS, pH7.4, containing 5% sucrose, 0.01% sarcosyl.

**Reconstitution** Reconstitute in sterile PBS, pH7.2-pH7.4.

**Isoelectric Point** 7.9

## GENE INFORMATION

**Gene Name** [Mib2 mindbomb E3 ubiquitin protein ligase 2 \[ Rattus norvegicus \(Norway rat\) \]](#)

**Official Symbol** [Mib2](#)

**Synonyms** Mib2; mindbomb E3 ubiquitin protein ligase 2; E3 ubiquitin-protein ligase MIB2; RBSC-skeletrophin; RBSC-skeletrophin/dystrophin-like polypeptide; RING-type E3 ubiquitin transferase MIB2; mind bomb homolog 2

**Gene ID** [474147](#)

**mRNA Refseq** [NM\\_001005901.2](#)

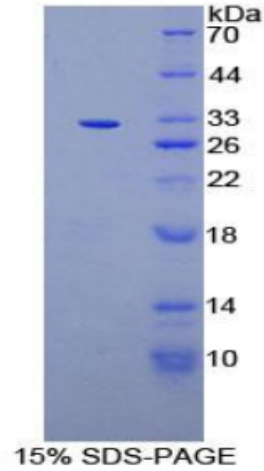
**Protein Refseq** [NP\\_001005901.2](#)

 Tel: 1-631-559-9269 1-516-512-3133

 Email: [info@creative-biomart.com](mailto:info@creative-biomart.com)  Fax: 1-631-938-8127

 45-1 Ramsey Road, Shirley, NY 11967, USA

SDS-PAGE



 Tel: 1-631-559-9269 1-516-512-3133

 Email: [info@creative-biomart.com](mailto:info@creative-biomart.com)  Fax: 1-631-938-8127

 45-1 Ramsey Road, Shirley, NY 11967, USA