

Recombinant Rat Mif protein

Cat. No. Mif-488R **Lot. No.** (See product label)

SPECIFICATION

Product Overview	Recombinant Rat Mif protein(P30904)(1-115 aa) was expressed in E.coli.
Species	Rat
Source	E.coli
ProteinLength	1-115 aa
Form	Lyophilized from a 0.2 µ filtered concentrated solution in 20 mM Tris, pH 8.0, 150 mM NaCl, 3 % trehalose.
Molecular Mass	Approximately 12.5 kDa, a single non-glycosylated polypeptide chain containing 115 amino acids.
AASequence	MPMFIVNTNV PRASVPEGFL SELTQQLAQA TGKPAQYIAV HVVPDQLMTF SGTSDPCALC SLHSIGKIGG AQNRNYSKLL CGLLSDRLHI SPDRVYINYY DMNAANVGWN GSTFA
Endotoxin	Less than 1 EU/g of rRtMIF as determined by LAL method.
Purity	>97% by SDS-PAGE and HPLC analyses.
Storage	Use a manual defrost freezer and avoid repeated freeze-thaw cycles. - 12 months from date of receipt, -20 to -70 °C as supplied. - 1 month, 2 to 8 °C under sterile conditions after reconstitution. - 3 months, -20 to -70 °C under sterile conditions after

 Tel: 1-631-559-9269 1-516-512-3133

 Email: info@creative-biomart.com  Fax: 1-631-938-8127

 45-1 Ramsey Road, Shirley, NY 11967, USA

reconstitution.

Reconstitution

We recommend that this vial be briefly centrifuged prior to opening to bring the contents to the bottom. Reconstitute in sterile distilled water or aqueous buffer containing 0.1 % BSA to a concentration of 0.1-1.0 mg/mL. Stock solutions should be apportioned into working aliquots and stored at ≤ -20 °C. Further dilutions should be made in appropriate buffered solutions.

GENE INFORMATION

Gene Name	Mif macrophage migration inhibitory factor [<i>Rattus norvegicus</i>]
Official Symbol	Mif
Synonyms	MIF, Glutathione-binding 13 kDa Protein, L-dopachrome Isomerase, L-dopachrome Tautomerase, Phenylpyruvate Tautomerase
Gene ID	81683
mRNA Refseq	NM_031051
Protein Refseq	NP_112313

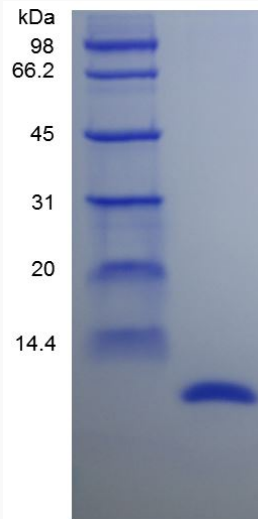
 Tel: 1-631-559-9269 1-516-512-3133

 Email: info@creative-biomart.com  Fax: 1-631-938-8127

 45-1 Ramsey Road, Shirley, NY 11967, USA



SDS-PAGE



Tel: 1-631-559-9269 1-516-512-3133

Email: info@creative-biomart.com Fax: 1-631-938-8127

45-1 Ramsey Road, Shirley, NY 11967, USA