

Recombinant Mouse Mif protein

Cat. No. Mif-5189M Lot. No. (See product label)

SPECIFICATION

Product Overview	Recombinant Mouse Mif protein was expressed in Escherichia coli.
Species	Mouse
Source	E.coli
ProteinLength	115
Description	<p>Macrophage migration inhibitory factor (MIF or MMIF), also named as glycosylation-inhibiting factor (GIF), L-dopachrome isomerase, or phenylpyruvate tautomerase, is a protein encoded by the MIF gene. It is released from white blood cells by bacterial antigen stimulation to trigger an acute immune response, or by glucocorticoids to counter-act the inhibitory effects of glucocorticoids on immune system. MIF is a homotrimer of which each subunit contains 115 amino acids. As mentioned above, MIF is involved in the innate immune response to bacterial pathogens and counter-acts the anti-inflammatory activity of glucocorticoids. Furthermore, it also plays a role as mediator in regulating the function of macrophages in host defense and has phenylpyruvate tautomerase and dopachrome tautomerase activity in vitro. Mouse MIF is active on human cells, while human MIF is active on mouse cells. Mouse MIF is 99%, 84%, 90%, and 90% a.a. identical to rat, porcine, bovine and human MIF, respectively.</p>
Form	Lyophilized from a 0.2µm filtered concentrated solution in PBS, pH 7.4, 1 mM DTT.
Molecular Mass	Approximately 12.5 kDa, a single non-glycosylated polypeptide chain containing 115

 Tel: 1-631-559-9269 1-516-512-3133

 Email: info@creative-biomart.com  Fax: 1-631-938-8127

 45-1 Ramsey Road, Shirley, NY 11967, USA

	amino acids.
AA Sequence	MPMFIVNTNVPRASVPEGFLSELTQQLAQATGKPAQYIAVHVVPDQLMTFSGTNDP CALCSLHSIGKIGGAQNRNYSKLLCGLLSDRLHISPDRVYINYYDMNAANVGWNGST FA
Endotoxin	Less than 1 EU/g of rMuMIF as determined by LAL method.
Purity	>96% by SDS-PAGE and HPLC analysis.
Storage	Use a manual defrost freezer and avoid repeated freeze-thaw cycles. 12 months from date of receipt, -20 to -70 centigrade as supplied. 1 month, 2 to 8 centigrade under sterile conditions after reconstitution. 3 months, -20 to -70 centigrade under sterile conditions after reconstitution.
Reconstitution	We recommend that this vial be briefly centrifuged prior to opening to bring the contents to the bottom. Reconstitute in sterile distilled water or aqueous buffer containing 0.1 % BSA to a concentration of 0.1-1.0 mg/mL. Stock solutions should be apportioned into working aliquots and stored at ≤-20 centigrade. Further dilutions should be made in appropriate buffered solutions.
GENE INFORMATION	
Gene Name	Mif
Official Symbol	Mif
Synonyms	MIF; macrophage migration inhibitory factor; DER6; L-dopachrome isomerase; L-dopachrome tautomerase; phenylpyruvate tautomerase; glycosylation-inhibiting factor; delayed early response protein 6; GIF; Glif; MGC107654;

 Tel: 1-631-559-9269 1-516-512-3133

 Email: info@creative-biomart.com  Fax: 1-631-938-8127

 45-1 Ramsey Road, Shirley, NY 11967, USA

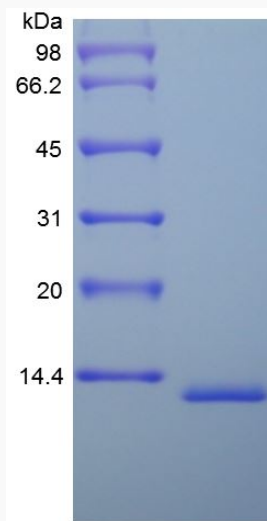
Gene ID 17319

mRNA Refseq NM_010798

Protein Refseq NP_034928

UniProt ID P34884

SDS-PAGE of Mif-5189M



 Tel: 1-631-559-9269 1-516-512-3133

 Email: info@creative-biomart.com  Fax: 1-631-938-8127

 45-1 Ramsey Road, Shirley, NY 11967, USA