

Recombinant Rat Mif protein, His-tagged

Cat. No. Mif-676R Lot. No. (See product label)

SPECIFICATION

Product Overview	Recombinant Rat Mif aa. (Phe4~Ser112 (Accession # P30904)) fused with N-terminal His tag was produced in E. coli cells.
Species	Rat
Source	E.coli
ProteinLength	Phe4~Ser112
Description	Inhibits random migration of macrophages and is involved in the pathogenesis of several inflammatory diseases.
Form	Freeze-dried powder
Molecular Mass	Predicted Molecular Mass: 13.3kDa
Endotoxin	<1.0EU per 1g (determined by the LAL method)
Purity	>95%
Characteristic	The isoelectric point is 6.7.
Applications	SDS-PAGE; WB; ELISA; IP
Stability	The thermal stability is described by the loss rate. The loss rate was determined by

 Tel: 1-631-559-9269 1-516-512-3133

 Email: info@creative-biomart.com  Fax: 1-631-938-8127

 45-1 Ramsey Road, Shirley, NY 11967, USA

accelerated thermal degradation test, that is, incubate the protein at 37°C for 48h, and no obvious degradation and precipitation were observed. The loss rate is less than 5% within the expiration date under appropriate storage condition.

Storage

Avoid repeated freeze/thaw cycles. Store at 2-8°C for one month. Aliquot and store at -80°C for 12 months.

Storage buffer

Supplied as lyophilized form in PBS, pH7.4, containing 5% trehalose, 0.01% sarcosyl.

Reconstitution

Reconstitute in sterile PBS, pH7.2-pH7.4.

GENE INFORMATION

Gene Name

Mif macrophage migration inhibitory factor (glycosylation-inhibiting factor) [*Rattus norvegicus* (Norway rat)]

Official Symbol

Mif

Synonyms

Mif; macrophage migration inhibitory factor (glycosylation-inhibiting factor); macrophage migration inhibitory factor; L-dopachrome isomerase; L-dopachrome tautomerase; glutathione-binding 13 kDa protein; phenylpyruvate tautomerase

Gene ID

81683

mRNA Refseq

NM_031051.1

Protein Refseq

NP_112313.1

UniProt ID

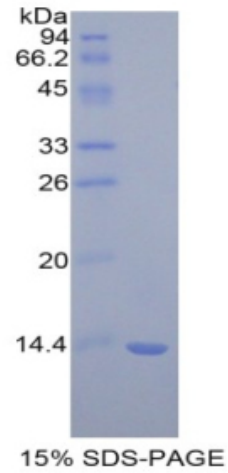
P30904

 Tel: 1-631-559-9269 1-516-512-3133

 Email: info@creative-biomart.com  Fax: 1-631-938-8127

 45-1 Ramsey Road, Shirley, NY 11967, USA

SDS-PAGE



 Tel: 1-631-559-9269 1-516-512-3133

 Email: info@creative-biomart.com  Fax: 1-631-938-8127

 45-1 Ramsey Road, Shirley, NY 11967, USA