

## Recombinant Mouse Mif Protein, His-tagged

Cat. No. Mif-7286M    Lot. No. (See product label)

### SPECIFICATION

<b>Product Overview</b>	Recombinant Mouse Mif protein with a His tag was expressed in E. coli.
<b>Species</b>	Mouse
<b>Source</b>	E.coli
<b>ProteinLength</b>	1-115
<b>Description</b>	Pro-inflammatory cytokine. Involved in the innate immune response to bacterial pathogens. The expression of MIF at sites of inflammation suggests a role as mediator in regulating the function of macrophages in host defense. Counteracts the anti-inflammatory activity of glucocorticoids. Has phenylpyruvate tautomerase and dopachrome tautomerase activity (in vitro), but the physiological substrate is not known. It is not clear whether the tautomerase activity has any physiological relevance, and whether it is important for cytokine activity.
<b>Form</b>	Liquid
<b>Molecular Mass</b>	14.9 kDa
<b>AA Sequence</b>	MGSSHHHHHSSGLVPRGSHMGSMFIVNTNVPRASVPEGFLSELTQQLAQATG KPAQYIAVHVVPDQLMTFSGTNDPCALCSLHSGKIGGAQNRNYSKLLCGLLSDRLHI SPDRVYINYYDMNAANVGWNGSTFA
<b>Purity</b>	> 90 % by SDS-PAGE

 Tel: 1-631-559-9269    1-516-512-3133

 Email: [info@creative-biomart.com](mailto:info@creative-biomart.com)     Fax: 1-631-938-8127

 45-1 Ramsey Road, Shirley, NY 11967, USA

<b>Stability</b>	Shelf life: one year from despatch.
<b>Storage</b>	Store undiluted at 2-8 centigrade for one week or (in aliquots) at -20 to -80 centigrade for longer. Avoid repeated freezing and thawing.
<b>Concentration</b>	0.5 mg/mL (determined by bradford assay)
<b>Storage Buffer</b>	Phosphate buffered saline containing 10 % glycerol, 1 mM DTT.

## GENE INFORMATION

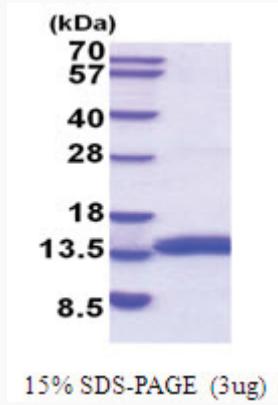
<b>Gene Name</b>	Mif macrophage migration inhibitory factor (glycosylation-inhibiting factor) [ <i>Mus musculus</i> (house mouse) ]
<b>Official Symbol</b>	Mif
<b>Synonyms</b>	Mif; macrophage migration inhibitory factor (glycosylation-inhibiting factor); GI; GIF; DER6; Glif; macrophage migration inhibitory factor; L-dopachrome isomerase; L-dopachrome tautomerase; delayed early response protein 6; phenylpyruvate tautomerase; EC 5.3.2.1; EC 5.3.3.12
<b>Gene ID</b>	17319
<b>mRNA Refseq</b>	NM_010798
<b>Protein Refseq</b>	NP_034928
<b>UniProt ID</b>	P34884

 Tel: 1-631-559-9269 1-516-512-3133

 Email: [info@creative-biomart.com](mailto:info@creative-biomart.com)  Fax: 1-631-938-8127

 45-1 Ramsey Road, Shirley, NY 11967, USA

**SDS-PAGE**



 Tel: 1-631-559-9269 1-516-512-3133

 Email: [info@creative-biomart.com](mailto:info@creative-biomart.com)  Fax: 1-631-938-8127

 45-1 Ramsey Road, Shirley, NY 11967, USA