

Recombinant Mouse Mmp12 Protein, His-tagged

Cat. No. Mmp12-600M **Lot. No.** (See product label)

SPECIFICATION

Product Overview	Recombinant Mouse Mmp12(Ala294~Cys473) fused with His tag at N-terminal was expressed in E. coli.
Species	Mouse
Source	E.coli
ProteinLength	Ala294~Cys473
Description	This gene encodes a member of the matrix metalloproteinase family of extracellular matrix-degrading enzymes that are involved in tissue remodeling, wound repair, progression of atherosclerosis and tumor invasion. The encoded preproprotein undergoes proteolytic processing to generate a mature, zinc-dependent endopeptidase enzyme. Mice lacking the encoded protein have a diminished capacity to degrade extracellular matrix components, do not develop emphysema in response to long-term exposure to cigarette smoke, and exhibit impaired clearance and increased mortality upon bacterial infection. This gene is located in a cluster of other matrix metalloproteinase genes on chromosome 9. Alternate splicing generates multiple transcript variants encoding distinct isoforms.
Form	PBS, pH7.4, containing 0.01% SKL, 1mM DTT, 5% Trehalose and Proclin300.
Molecular Mass	22.9kDa
Identity	Reconstitute in PBS or others

 Tel: 1-631-559-9269 1-516-512-3133

 Email: info@creative-biomart.com  Fax: 1-631-938-8127

 45-1 Ramsey Road, Shirley, NY 11967, USA

Endotoxin	<1.0EU per 1g (determined by the LAL method)
Purity	> 95%
Applications	Positive Control; Immunogen; SDS-PAGE; WB. If bio-activity of the protein is needed, please check active protein
Stability	The thermal stability is described by the loss rate. The loss rate was determined by accelerated thermal degradation test, that is, incubate the protein at 37 centigrade for 48h, and no obvious degradation and precipitation were observed. The loss rate is less than 5% within the expiration date under appropriate storage condition.
Storage	Avoid repeated freeze/thaw cycles. Store at 2-8 centigrade for one month. Aliquot and store at -80 centigrade for 12 months.
Reconstitution	Reconstitute in PBS or others

GENE INFORMATION

Gene Name	Mmp12 matrix metalloproteinase 12 [Mus musculus]
Official Symbol	Mmp12
Synonyms	MMP12; matrix metalloproteinase 12; macrophage metalloelastase; MME; MMP-12; macrophage elastase; macrophage-metalloelastase; matrix metalloproteinase 12; matrix metalloproteinase-12; Mmel; AV378681;
Gene ID	17381
mRNA Refseq	NM_008605

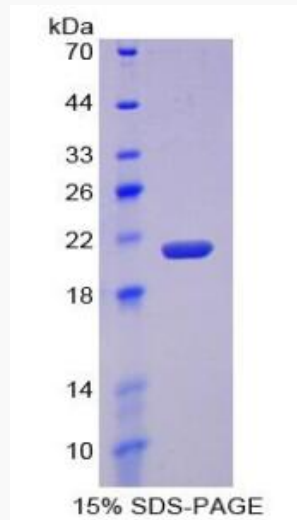
 Tel: 1-631-559-9269 1-516-512-3133

 Email: info@creative-biomart.com  Fax: 1-631-938-8127

 45-1 Ramsey Road, Shirley, NY 11967, USA

Protein Refseq NP_032631

UniProt ID P34960



 Tel: 1-631-559-9269 1-516-512-3133

 Email: info@creative-biomart.com  Fax: 1-631-938-8127

 45-1 Ramsey Road, Shirley, NY 11967, USA