

Recombinant Rat Mmp12 Protein, His-tagged

Cat. No. Mmp12-604R **Lot. No.** (See product label)

SPECIFICATION

Product Overview	Recombinant Rat Mmp12(Pro270~Arg362) fused with His tag at N-terminal was expressed in E. coli.
Species	Rat
Source	E.coli
ProteinLength	Pro270~Arg362
Description	Mmp12 played an important role in many functions.
Form	20mM Tris, 150mM NaCl,pH8.0, containing 1mM EDTA, 1mM DTT, 0.01% SKL, 5% Trehalose and Proclin300.
Molecular Mass	12.2kDa
Identity	Reconstitute in 20mM Tris, 150mM NaCl (pH8.0) to a concentration of 0.1-1.0 mg/mL. Do not vortex.
Endotoxin	<1.0EU per 1g (determined by the LAL method)
Purity	> 97%
Applications	Positive Control; Immunogen; SDS-PAGE; WB. If bio-activity of the protein is needed, please check active protein

 Tel: 1-631-559-9269 1-516-512-3133

 Email: info@creative-biomart.com  Fax: 1-631-938-8127

 45-1 Ramsey Road, Shirley, NY 11967, USA



Stability	The thermal stability is described by the loss rate. The loss rate was determined by accelerated thermal degradation test, that is, incubate the protein at 37 centigrade for 48h, and no obvious degradation and precipitation were observed. The loss rate is less than 5% within the expiration date under appropriate storage condition.
Storage	Avoid repeated freeze/thaw cycles. Store at 2-8 centigrade for one month. Aliquot and store at -80 centigrade for 12 months.
Reconstitution	Reconstitute in PBS or others

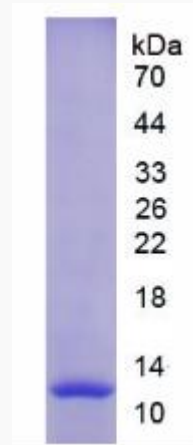
GENE INFORMATION

Gene Name	Mmp12 matrix metalloproteinase 12 [Rattus norvegicus]
Official Symbol	Mmp12
Synonyms	MMP12; matrix metalloproteinase 12; macrophage metalloelastase; MMP-12; matrix metalloproteinase 12; matrix metalloproteinase-12; Mme;
Gene ID	117033
mRNA Refseq	NM_053963
Protein Refseq	NP_446415

Tel: 1-631-559-9269 1-516-512-3133

Email: info@creative-biomart.com Fax: 1-631-938-8127

45-1 Ramsey Road, Shirley, NY 11967, USA



Tel: 1-631-559-9269 1-516-512-3133

Email: info@creative-biomart.com Fax: 1-631-938-8127

45-1 Ramsey Road, Shirley, NY 11967, USA