

Recombinant Mouse Mmp14 Protein, His-tagged

Cat. No. Mmp14-183M Lot. No. (See product label)

SPECIFICATION

Product Overview	Recombinant Mouse Mmp14(His121~Asn487) fused with His tag at N-terminal was expressed in E. coli.
Species	Mouse
Source	E.coli
ProteinLength	His121~Asn487
Description	This gene encodes a member of the matrix metalloproteinase family of extracellular matrix-degrading enzymes that are involved in tissue remodeling, wound repair, progression of atherosclerosis and tumor invasion. The encoded preproprotein undergoes proteolytic processing to generate a mature, zinc-dependent endopeptidase enzyme. Mice lacking the encoded protein exhibit craniofacial dysmorphism, arthritis, osteopenia, dwarfism, and fibrosis of soft tissues.
Form	20mM Tris, 150mM NaCl, pH8.0, containing 1mM EDTA, 1mM DTT, 0.01% SKL, 5% Trehalose and Proclin300.
Molecular Mass	45.9kDa
Endotoxin	<1.0EU per 1ug (determined by the LAL method)
Purity	> 95%

 Tel: 1-631-559-9269 1-516-512-3133

 Email: info@creative-biomart.com  Fax: 1-631-938-8127

 45-1 Ramsey Road, Shirley, NY 11967, USA

Applications	Positive Control; Immunogen; SDS-PAGE; WB. If bio-activity of the protein is needed, please check active protein
Stability	The thermal stability is described by the loss rate. The loss rate was determined by accelerated thermal degradation test, that is, incubate the protein at 37 centigrade for 48h, and no obvious degradation and precipitation were observed. The loss rate is less than 5% within the expiration date under appropriate storage condition.
Storage	Avoid repeated freeze/thaw cycles. Store at 2-8 centigrade for one month. Aliquot and store at -80 centigrade for 12 months.
Reconstitution	Reconstitute in 20mM Tris, 150mM NaCl (pH8.0) to a concentration of 0.1-1.0 mg/mL. Do not vortex.

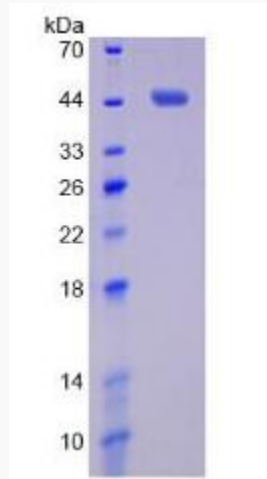
GENE INFORMATION

Gene Name	Mmp14 matrix metalloproteinase 14 (membrane-inserted) [Mus musculus]
Official Symbol	Mmp14
Synonyms	MMP14; matrix metalloproteinase 14 (membrane-inserted); matrix metalloproteinase-14; MMP-14; MMP-X1; MT1MMP; MTMMP1; MT-MMP 1; Membrane type 1-MMP; type 1 matrix metalloproteinase 14; membrane-type matrix metalloproteinase 1; membrane-type-1 matrix metalloproteinase; matrix metalloproteinase 14 (membrane-inserted); MT1-MMP; AI325305; MT-MMP-1;
Gene ID	17387
mRNA Refseq	NM_008608
Protein Refseq	NP_032634

 Tel: 1-631-559-9269 1-516-512-3133

 Email: info@creative-biomart.com  Fax: 1-631-938-8127

 45-1 Ramsey Road, Shirley, NY 11967, USA



 Tel: 1-631-559-9269 1-516-512-3133

 Email: info@creative-biomart.com  Fax: 1-631-938-8127

 45-1 Ramsey Road, Shirley, NY 11967, USA