

## Recombinant Mouse Mmp15 Protein, His-tagged

**Cat. No.** Mmp15-460M    **Lot. No.** (See product label)

### SPECIFICATION

<b>Product Overview</b>	Recombinant Mouse Mmp15(Pro336~Arg539) fused with His tag at N-terminal was expressed in E. coli.
<b>Species</b>	Mouse
<b>Source</b>	E.coli
<b>ProteinLength</b>	Pro336~Arg539
<b>Description</b>	This gene encodes a member of the matrix metalloproteinase family of extracellular matrix-degrading enzymes that are involved in tissue remodeling, wound repair, progression of atherosclerosis and tumor invasion. The encoded preproprotein undergoes proteolytic processing to generate a mature, zinc-dependent endopeptidase enzyme. A deficiency of the encoded protein in mice is compatible with normal development and postnatal growth.
<b>Form</b>	PBS, pH7.4, containing 0.01% SKL, 1mM DTT, 5% Trehalose and Proclin300.
<b>Molecular Mass</b>	27.8kDa
<b>Identity</b>	Reconstitute in PBS or others
<b>Endotoxin</b>	<1.0EU per 1g (determined by the LAL method)
<b>Purity</b>	> 95%

 Tel: 1-631-559-9269    1-516-512-3133

 Email: [info@creative-biomart.com](mailto:info@creative-biomart.com)     Fax: 1-631-938-8127

 45-1 Ramsey Road, Shirley, NY 11967, USA

<b>Applications</b>	Positive Control; Immunogen; SDS-PAGE; WB. If bio-activity of the protein is needed, please check active protein
<b>Stability</b>	The thermal stability is described by the loss rate. The loss rate was determined by accelerated thermal degradation test, that is, incubate the protein at 37 centigrade for 48h, and no obvious degradation and precipitation were observed. The loss rate is less than 5% within the expiration date under appropriate storage condition.
<b>Storage</b>	Avoid repeated freeze/thaw cycles. Store at 2-8 centigrade for one month. Aliquot and store at -80 centigrade for 12 months.
<b>Reconstitution</b>	Reconstitute in PBS or others

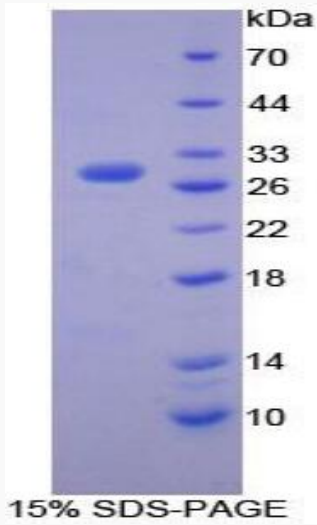
## GENE INFORMATION

<b>Gene Name</b>	<a href="#">Mmp15 matrix metalloproteinase 15 [ Mus musculus ]</a>
<b>Official Symbol</b>	<a href="#">Mmp15</a>
<b>Synonyms</b>	MMP15; matrix metalloproteinase 15; matrix metalloproteinase-15; MMP-15; MT2MMP; MTMMP2; MT-MMP 2; Membrane type 2-MMP; matrix metalloproteinase 15; membrane-type matrix metalloproteinase 2; membrane-type-2 matrix metalloproteinase; MT2-MMP; AI503551;
<b>Gene ID</b>	<a href="#">17388</a>
<b>mRNA Refseq</b>	<a href="#">NM_008609</a>
<b>Protein Refseq</b>	<a href="#">NP_032635</a>

 Tel: 1-631-559-9269 1-516-512-3133

 Email: [info@creative-biomart.com](mailto:info@creative-biomart.com)  Fax: 1-631-938-8127

 45-1 Ramsey Road, Shirley, NY 11967, USA



Tel: 1-631-559-9269 1-516-512-3133

Email: [info@creative-biomart.com](mailto:info@creative-biomart.com) Fax: 1-631-938-8127

45-1 Ramsey Road, Shirley, NY 11967, USA