

Recombinant Mouse Mmp2 Protein, His-tagged

Cat. No. Mmp2-1784M Lot. No. (See product label)

SPECIFICATION

Product Overview	Recombinant Mouse Mmp2 Protein (Tyr445-Cys662) with N-His tag was expressed in E. coli.
Species	Mouse
Source	E.coli
ProteinLength	Tyr445-Cys662
Description	<p>This gene encodes a member of the matrix metalloproteinase family of extracellular matrix-degrading enzymes that are involved in tissue remodeling, wound repair, progression of atherosclerosis and tumor invasion. The encoded preproprotein undergoes proteolytic processing to generate a mature, zinc-dependent endopeptidase enzyme that hydrolyzes collagens, gelatins, laminin, fibronectin and elastin. Mice lacking the encoded protein exhibit suppressed angiogenesis and attenuated features of human multicentric osteolysis with arthritis including abnormal skeletal and craniofacial development.</p>
Form	Freeze-dried powder
Molecular Mass	Predicted Molecular Mass: 25.8 kDa Accurate Molecular Mass: 27 kDa
Purity	> 97%

 Tel: 1-631-559-9269 1-516-512-3133

 Email: info@creative-biomart.com  Fax: 1-631-938-8127

 45-1 Ramsey Road, Shirley, NY 11967, USA

Applications	Positive Control; Immunogen; SDS-PAGE; WB.
Stability	The thermal stability is described by the loss rate. The loss rate was determined by accelerated thermal degradation test, that is, incubate the protein at 37 centigrade for 48h, and no obvious degradation and precipitation were observed. The loss rate is less than 5% within the expiration date under appropriate storage condition.
Storage	Avoid repeated freeze/thaw cycles. Store at 2-8 centigrade for one month. Aliquot and store at -80 centigrade for 12 months.
Storage Buffer	20mM Tris, 150mM NaCl, pH8.0, containing 1mM EDTA, 1mM DTT, 0.01% SKL, 5% Trehalose and Proclin300.
Reconstitution	Reconstitute in 20mM Tris, 150mM NaCl (pH8.0) to a concentration of 0.1-1.0 mg/mL. Do not vortex.

GENE INFORMATION

Gene Name	Mmp2 matrix metalloproteinase 2 [Mus musculus (house mouse)]
Official Symbol	Mmp2
Synonyms	MMP2; matrix metalloproteinase 2; 72 kDa type IV collagenase; gelatinase A; 72kD gelatinase; 72kDa gelatinase; 72 kDa gelatinase; 72kD type IV collagenase; 72kDa type IV collagenase; matrix metalloproteinase 2; matrix metalloproteinase-2; GelA; Clg4a; MMP-2;
Gene ID	17390
mRNA Refseq	NM_008610

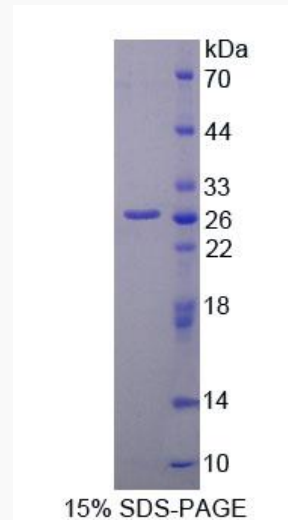
 Tel: 1-631-559-9269 1-516-512-3133

 Email: info@creative-biomart.com  Fax: 1-631-938-8127

 45-1 Ramsey Road, Shirley, NY 11967, USA

Protein Refseq NP_032636

UniProt ID P33434



 Tel: 1-631-559-9269 1-516-512-3133

 Email: info@creative-biomart.com  Fax: 1-631-938-8127

 45-1 Ramsey Road, Shirley, NY 11967, USA