

Recombinant Mouse Matrix Metalloproteinase 2

Cat. No. Mmp2-415M Lot. No. (See product label)

SPECIFICATION

Species Mouse

Source Mammalian Cells

Description

Matrix metalloproteinase 2, also known as MMP2, is an enzyme involved in the breakdown of extracellular matrix in normal physiological processes, such as embryonic development, reproduction, and tissue remodeling, as well as in disease processes, such as arthritis and metastasis. Most MMP"s are secreted as inactive proproteins which are activated when cleaved by extracellular proteinases. MMP-2 degrades type IV collagen, the major structural component of basement membranes and plays a role in endometrial menstrual breakdown, regulation of vascularization and the inflammatory response. MMP2 has been found to be associated with tumor invasion in various cancers.

Molecular Weight The molecular weight of Recombinant Mouse MMP-2 is Mr 72 kDa.

State Of Matter Solution.

Purity >95% by SDS Page and analyzed by silver stain.

Formulation Supplied as a 0.2 μ m filtered solution of 25 mM Tris, pH 7.5, 5 mM CaCl₂, 75 mM NaCl, 0.025% Brij-35 and 50% glycerol at a concentration of 0.113 mg/mL.

Endotoxin <1.0 EU/g as determined by the LAL method.

 Tel: 1-631-559-9269 1-516-512-3133

 Email: info@creative-biomart.com  Fax: 1-631-938-8127

 45-1 Ramsey Road, Shirley, NY 11967, USA

Biological Activity The specific activity, measured under the described conditions, is > 1,500 pmoles/min/μg.

Storage And Stability This protein is stable for one month when stored sterile at -20°C or for three months when stored at -70°C in a manual defrost freezer. Avoid Repeated Freeze Thaw Cycles.

GENE INFORMATION

Gene Name [Mmp2 matrix metalloproteinase 2 \[Mus musculus \]](#)

Synonyms Mmp2; matrix metalloproteinase 2; GelA; Clg4a; MMP-2; gelatinase A; 72kD gelatinase; 72kDa gelatinase; 72kD type IV collagenase; 72kDa type IV collagenase; matrix metalloproteinase-2; EC 3.4.24.24

Gene ID [17390](#)

mRNA Refseq [NM_008610](#)

Protein Refseq [NP_032636](#)

UniProt ID [P33434](#)

Chromosome Location 8 C5; 8 44.0 cM

Pathway Bladder cancer; GnRH signaling pathway; Leukocyte transendothelial migration; Pathways in cancer

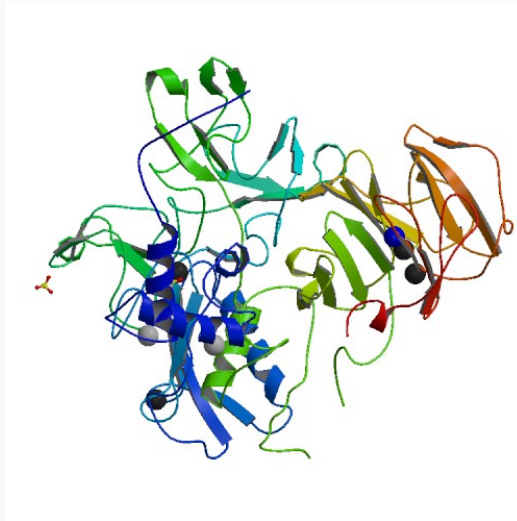
Function calcium ion binding; hydrolase activity; metal ion binding; metalloendopeptidase activity; metalloproteinase activity; peptidase activity; zinc ion binding

 Tel: 1-631-559-9269 1-516-512-3133

 Email: info@creative-biomart.com  Fax: 1-631-938-8127

 45-1 Ramsey Road, Shirley, NY 11967, USA

PDB rendering based
on 1ck7.



 Tel: 1-631-559-9269 1-516-512-3133

 Email: info@creative-biomart.com  Fax: 1-631-938-8127

 45-1 Ramsey Road, Shirley, NY 11967, USA