

## Recombinant Rat Mmp3 protein, His-tagged

Cat. No. Mmp3-7422R Lot. No. (See product label)

### SPECIFICATION

<b>Product Overview</b>	Recombinant Rat Mmp3 protein(P03957)(98-475aa), fused with N-terminal His tag, was expressed in E.coli.
<b>Species</b>	Rat
<b>Source</b>	E.coli
<b>ProteinLength</b>	98-475aa
<b>Form</b>	If the delivery form is liquid, the default storage buffer is Tris/PBS-based buffer, 5%-50% glycerol. If the delivery form is lyophilized powder, the buffer before lyophilization is Tris/PBS-based buffer, 6% Trehalose, pH 8.0.
<b>Molecular Mass</b>	48.5 kDa
<b>Purity</b>	Greater than 85% as determined by SDS-PAGE.
<b>Storage</b>	Store at -20°C/-80°C upon receipt, aliquoting is necessary for mutiple use. Avoid repeated freeze-thaw cycles.
<b>Reconstitution</b>	We recommend that this vial be briefly centrifuged prior to opening to bring the contents to the bottom. Please reconstitute protein in deionized sterile water to a concentration of 0.1-1.0 mg/mL. We recommend to add 5-50% of glycerol (final concentration) and aliquot for long-term storage at -20°C/-80°C.

 Tel: 1-631-559-9269 1-516-512-3133

 Email: [info@creative-biomart.com](mailto:info@creative-biomart.com)  Fax: 1-631-938-8127

 45-1 Ramsey Road, Shirley, NY 11967, USA

**AA Sequence**

FSTFPGSPKWRKNHISYRIVNYTLDLPRESVDSAIALKVVWEEVTPLTFSRISEGEA  
DIMISFAVEEHGDFIPFDGPGMVLAHAYAPGPGTNGDAHFDDDRWTDDVTGTNLF  
LVAAHELGHSLGLFHSANAEALMYPVYKSSTDLARFHLSQDDVDGIQSLYGPPTESP  
DVLVVPTKSNLDPETLPMCSSALSFDAVSTLRGEVLFFKDRHFWRKSLRTPPEPGFY  
LISSFWPSLPSNMDAAAYEVTNRDVFILKGNQIWAIRGHEELAGYPKSIHTLGLPETV  
QKIDAAISLKDQKKTYFFVEDKFWRFDEKKQSMDPEFPRKIAENFPGIGTKVDAVFEA  
FGFLYFFSGSSQLEFDPNAGKVTHILKSNSWFNC

**GENE INFORMATION**

**Gene Name** [Mmp3 matrix metalloproteinase 3 \[ Rattus norvegicus \]](#)

**Official Symbol** [Mmp3](#)

**Synonyms** MMP3; matrix metalloproteinase 3; stromelysin-1; SL-1; MMP-3; transin-1; PTR1 protein; matrix metalloproteinase 3; matrix metalloproteinase-3;

**Gene ID** [171045](#)

**mRNA Refseq** [NM\\_133523](#)

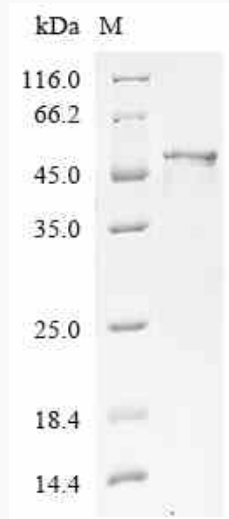
**Protein Refseq** [NP\\_598207](#)

 Tel: 1-631-559-9269 1-516-512-3133

 Email: [info@creative-biomart.com](mailto:info@creative-biomart.com)  Fax: 1-631-938-8127

 45-1 Ramsey Road, Shirley, NY 11967, USA

**SDS-PAGE**



 Tel: 1-631-559-9269 1-516-512-3133

 Email: [info@creative-biomart.com](mailto:info@creative-biomart.com)  Fax: 1-631-938-8127

 45-1 Ramsey Road, Shirley, NY 11967, USA