

Active Recombinant Rat Mmp9 protein (20-708aa), C-6xHis-tagged

Cat. No. Mmp9-37H **Lot. No.** (See product label)

SPECIFICATION

Product Overview	Recombinant rat MMP-9 protein (20-708aa), fused to His-tag at C-terminus, was expressed in HEK293 cell and purified by using conventional chromatography techniques.
Species	Rat
Source	HEK293
ProteinLength	20-708
Description	Enables fibronectin binding activity and metallopeptidase activity. Involved in several processes, including cellular response to cell-matrix adhesion; cellular response to cytokine stimulus; and cellular response to iron(III) ion. Located in extracellular space. Part of protein-containing complex. Used to study artery disease (multiple); brain ischemia (multiple); congestive heart failure; glomerulosclerosis; and lung disease (multiple). Biomarker of several diseases, including artery disease (multiple); brain disease (multiple); chronic obstructive pulmonary disease (multiple); glucose metabolism disease (multiple); and kidney disease (multiple). Human ortholog(s) of this gene implicated in several diseases, including Down syndrome; anodontia; artery disease (multiple); autoimmune disease (multiple); and chronic obstructive pulmonary disease (multiple). Orthologous to human MMP9 (matrix metallopeptidase 9).
Form	Liquid

 Tel: 1-631-559-9269 1-516-512-3133

 Email: info@creative-biomart.com  Fax: 1-631-938-8127

 45-1 Ramsey Road, Shirley, NY 11967, USA

Bio-activity	Specific activity is > 2,000 pmol/min/μg, and is defined as the amount of enzyme that cleaves 1pmol of Mca-PLGL-Dpa-AR-NH2 per minute at pH 7.5 at 25 centigrade.
Molecular Mass	77.2kDa (695aa)
AA Sequence	<p>APHQRQPTYVVFPRDLKTSNLTDQLAEDYLYRYGYTRAAQMMGEKQSLRPALLML QKQLSLPQTGELDSETLKAIRSPRCGVDPVVGKQTFEGDLKWHHHNITYWIQSYTE DLPRDVIDDSFARAFVWSAVTPLTFTRVYGLEADIVIQFGVAEHGDGYPFDGKDG LAHAFPPGPGIQQDAHFDDDELWSLKGAVVPTYFGNANGAPCHFPTFEGRSYLS CTTDGRNDGKPWCGTTADYDTRKYGFCPSENLYTEHGNGDGKPCVFPFIFEGHS YSACTTKGRSDGYRWCATTANYDQDKLYGFCPTRADVTVTGGNSAGEMCVFPFVF LGKQYSTCTGEGRSDGRLWCATTSNFDADKKWGFCDQGYSFLVAAHEFGHALG LDHSSVPEALMYPMYHYHEDSPLHEDDIKGIQHLYGRGSKPDRPPATTAEPQPT APPTMCPTAPPMAYPTGGPTVAPTGAPSPGPTGPPTAGPSEAPTESSTPVDNPCN VDVFDIAIDIQGALHFFKDGRYWKFSNHGGSQQLQGPFLIARTWPALPAKLNSAFEDP QSKKIFFFSGRKMVVYTGQTVLGPRLDKLGLGSEVTLVTGLLPRRGGKALLISRER IWKFDLKSQKVDPQSVTRLDNEFSGVPWNSHNVFHYQDKAYFCHDKYFWRVFSFHN RVNQVDHVAYVTYDLLQCP</p>
Endotoxin	<1.0 EU/μg of the protein by the LAL method.
Purity	>90% by SDS-PAGE
Applications	SDS-PAGE, Enzyme Activity
Storage	Can be stored at +2 to +8 centigrade for 1 week. For long term storage, aliquot and store at -20 to -80 centigrade. Avoid repeated freezing and thawing cycles.
Concentration	0.5 mg/mL (determined by Absorbance at 280nm)

 Tel: 1-631-559-9269 1-516-512-3133

 Email: info@creative-biomart.com  Fax: 1-631-938-8127

 45-1 Ramsey Road, Shirley, NY 11967, USA

Storage Buffer 20mM Tris-HCl (pH 7.5) containing 1mM CaCl₂, 100mM NaCl, 10% glycerol

GENE INFORMATION

Gene Name [Mmp9 matrix metalloproteinase 9 \[Rattus norvegicus \]](#)

Official Symbol [Mmp9](#)

Synonyms MMP9; matrix metalloproteinase 9; matrix metalloproteinase-9; GELB; MMP-9; gelatinase B; 92 kDa gelatinase; 92 kDa type IV collagenase; 92-kDa type IV collagenase; matrix metalloproteinase 9 (gelatinase B 92-kDa type IV collagenase); matrix metalloproteinase 9 (gelatinase B, 92-kDa type IV collagenase)

Gene ID [81687](#)

mRNA Refseq [NM_031055](#)

Protein Refseq [NP_112317](#)

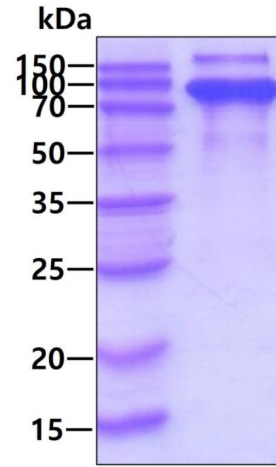
UniProt ID [P50282](#)

 Tel: 1-631-559-9269 1-516-512-3133

 Email: info@creative-biomart.com  Fax: 1-631-938-8127

 45-1 Ramsey Road, Shirley, NY 11967, USA

SDS-PAGE



 Tel: 1-631-559-9269 1-516-512-3133

 Email: info@creative-biomart.com  Fax: 1-631-938-8127

 45-1 Ramsey Road, Shirley, NY 11967, USA