

Recombinant Rat Mog protein, His-tagged

Cat. No. Mog-75R Lot. No. (See product label)

SPECIFICATION

Product Overview	Recombinant Rat Mog(Gly28~Gly152) fused with His tag at N-terminal was expressed in E. coli.
Species	Rat
Source	E.coli
ProteinLength	Gly28~Gly152
Description	Mog played an important role in many functions.
Form	PBS, pH7.4, containing 0.01% SKL, 1mM DTT, 5% Trehalose and Proclin300
Molecular Mass	15.7kDa
Endotoxin	<1.0EU per 1g (determined by the LAL method)
Purity	> 95%
Applications	SDS-PAGE; WB; ELISA; IP
Stability	The thermal stability is described by the loss rate. The loss rate was determined by accelerated thermal degradation test, that is, incubate the protein at 37 centigrade for 48h, and no obvious degradation and precipitation were observed. The loss rate is less than 5% within the expiration date under appropriate storage condition.

 Tel: 1-631-559-9269 1-516-512-3133

 Email: info@creative-biomart.com  Fax: 1-631-938-8127

 45-1 Ramsey Road, Shirley, NY 11967, USA

Storage	Avoid repeated freeze/thaw cycles. Store at 2-8 centigrade for one month. Aliquot and store at -80 centigrade for 12 months.
----------------	--

Reconstitution	Reconstitute in PBS or others.
-----------------------	--------------------------------

GENE INFORMATION

Gene Name	Mog myelin oligodendrocyte glycoprotein [<i>Rattus norvegicus</i>]
------------------	--

Official Symbol	Mog
------------------------	-----

Synonyms	MOG; myelin oligodendrocyte glycoprotein; myelin-oligodendrocyte glycoprotein; dystonia 2, torsion (autosomal recessive); MGC105427;
-----------------	--

Gene ID	24558
----------------	-------

mRNA Refseq	NM_022668
--------------------	-----------

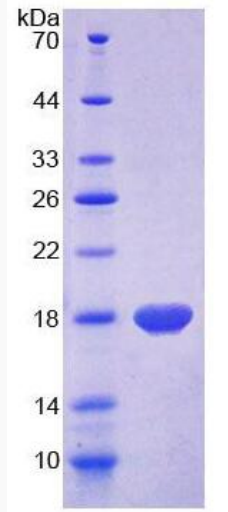
Protein Refseq	NP_073159
-----------------------	-----------

Chromosome Location	20p12
----------------------------	-------

 Tel: 1-631-559-9269 1-516-512-3133

 Email: info@creative-biomart.com  Fax: 1-631-938-8127

 45-1 Ramsey Road, Shirley, NY 11967, USA



 Tel: 1-631-559-9269 1-516-512-3133

 Email: info@creative-biomart.com  Fax: 1-631-938-8127

 45-1 Ramsey Road, Shirley, NY 11967, USA