

Recombinant Mouse Ms4a1 Protein, His-tagged

Cat. No. Ms4a1-1136M Lot. No. (See product label)

SPECIFICATION

Product Overview	Recombinant Mouse Ms4a1 Protein (Leu133-Pro291) with His tag was expressed in E. coli.
Species	Mouse
Source	E.coli
ProteinLength	Leu133-Pro291
Description	Predicted to enable epidermal growth factor receptor binding activity; identical protein binding activity; and immunoglobulin binding activity. Involved in calcium ion import into cytosol. Acts upstream of or within response to bacterium. Located in external side of plasma membrane. Is expressed in several structures, including alimentary system; brain; hemolymphoid system gland; liver and biliary system; and reproductive system. Human ortholog(s) of this gene implicated in common variable immunodeficiency. Orthologous to human MS4A1 (membrane spanning 4-domains A1).
Form	Freeze-dried powder
Molecular Mass	Predicted Molecular Mass: 21.7 kDa; Accurate Molecular Mass: 25 kDa
Purity	> 90%
Applications	Positive Control; Immunogen; SDS-PAGE; WB.

 Tel: 1-631-559-9269 1-516-512-3133

 Email: info@creative-biomart.com  Fax: 1-631-938-8127

 45-1 Ramsey Road, Shirley, NY 11967, USA



Stability	The thermal stability is described by the loss rate. The loss rate was determined by accelerated thermal degradation test, that is, incubate the protein at 37 centigrade for 48h, and no obvious degradation and precipitation were observed. The loss rate is less than 5% within the expiration date under appropriate storage condition.
Storage	Avoid repeated freeze/thaw cycles. Store at 2-8 centigrade for one month. Aliquot and store at -80 centigrade for 12 months.
Storage Buffer	PBS, pH7.4, containing 0.01% SKL, 1mM DTT, 5% Trehalose and Proclin300.
Reconstitution	Reconstitute in 20mM Tris, 150mM NaCl (pH8.0) to a concentration of 0.1-1.0 mg/mL. Do not vortex.

GENE INFORMATION

Gene Name	Ms4a1 membrane-spanning 4-domains, subfamily A, member 1 [Mus musculus (house mouse)]
Official Symbol	Ms4a1
Synonyms	MS4A1; membrane-spanning 4-domains, subfamily A, member 1; B-lymphocyte antigen CD20; CD20 antigen; lymphocyte antigen 44; B-cell differentiation antigen Ly-44; membrane-spanning 4-domains, subfamily A, member 2; Cd20; Ly-44; Ms4a2; AA960661;
Gene ID	12482
mRNA Refseq	NM_007641
Protein Refseq	NP_031667

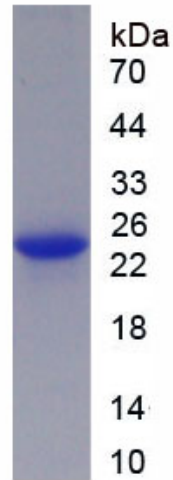
Tel: 1-631-559-9269 1-516-512-3133

Email: info@creative-biomart.com Fax: 1-631-938-8127

45-1 Ramsey Road, Shirley, NY 11967, USA

UniProt ID

P19437



 Tel: 1-631-559-9269 1-516-512-3133

 Email: info@creative-biomart.com  Fax: 1-631-938-8127

 45-1 Ramsey Road, Shirley, NY 11967, USA