

Recombinant Mouse Msln Protein, Asp298-Ser600, C-His tagged, Biotinylated

Cat. No. Msln-267M **Lot. No.** (See product label)

SPECIFICATION

Product Overview	Recombinant mouse MSLN/Mesothelin-C-His protein was developed from HEK293 and has a target region of C-His.
Species	Mouse
Source	HEK293
ProteinLength	Asp298-Ser600
Description	Predicted to be involved in cell-matrix adhesion. Predicted to act upstream of or within cell adhesion. Located in extracellular space. Is expressed in several structures, including body cavity or lining; genitourinary system; gut; heart; and respiratory system. Human ortholog(s) of this gene implicated in ovarian cancer; pancreas disease; pancreatic cancer; and pancreatic ductal carcinoma. Orthologous to human MSLN (mesothelin).
Conjugation/Label	Biotin
Form	Lyophilised
Endotoxin	Endotoxin level was found to be less than 0.1 ng/μg (1 EU/μg).
Notes	FOR RESEARCH USE ONLY (RUO).

 Tel: 1-631-559-9269 1-516-512-3133

 Email: info@creative-biomart.com  Fax: 1-631-938-8127

 45-1 Ramsey Road, Shirley, NY 11967, USA

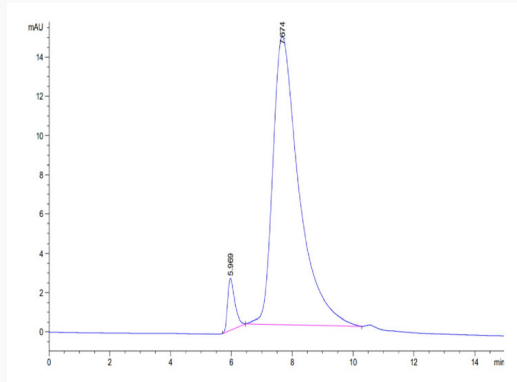
Storage	The lyophilized protein is stable for at least 1 year from date of receipt at -20 centigrade.
Storage Buffer	Lyophilised from 0.2 µm filtered PBS solution pH 7.4. Upon receipt centrifuge vial to ensure maximal product extraction, recommended: 20 sec, 5K RPM
Conjugation	Biotin
GENE INFORMATION	
Gene Name	Msln mesothelin [Mus musculus]
Official Symbol	Msln
Synonyms	MSLN; mesothelin; megakaryocyte potentiating factor; pre-pro-megakaryocyte-potentiating factor; MPF;
Gene ID	56047
mRNA Refseq	NM_018857
Protein Refseq	NP_061345
UniProt ID	Q61468
Biotinylated Mouse MSLN on Tris-Bis PAGE under reduced condition. The purity is greater than 95%.	

 Tel: 1-631-559-9269 1-516-512-3133

 Email: info@creative-biomart.com  Fax: 1-631-938-8127

 45-1 Ramsey Road, Shirley, NY 11967, USA

**The purity of
Biotinylated Mouse
MSLN is greater than
95% as determined
by SEC-HPLC.**



 Tel: 1-631-559-9269 1-516-512-3133

 Email: info@creative-biomart.com  Fax: 1-631-938-8127

 45-1 Ramsey Road, Shirley, NY 11967, USA