

Recombinant Mouse Msln protein, His-tagged, Biotinylated(Primary Amine Labeling)

Cat. No. Msln-6743M Lot. No. (See product label)

SPECIFICATION

Product Overview	Biotinylated Recombinant Mouse Msln protein(Q61468-1)(Asp298-Ser600)(Primary Amine Labeling), fused with C-terminal His tag, was expressed in HEK293.
Species	Mouse
Source	HEK293
ProteinLength	Asp298-Ser600
Tag	C-His
Conjugation/Label	Biotin; Primary Amine
Form	Lyophilized from 0.22µm filtered solution in PBS (pH 7.4). Normally 5% trehalose is added as protectant before lyophilization.
Bio-activity	Immobilized Human CA125, His Tag at 5µg/ml (100µl/well) on the plate. Dose response curve for Biotinylated Mouse MSLN, His Tag with the EC50 of 0.79µg/ml determined by ELISA.
Molecular Mass	The protein has a predicted MW of 35.2 kDa. Due to glycosylation, the protein migrates to 45-60 kDa based on Tris-Bis PAGE result.
Endotoxin	Less than 1EU per µg by the LAL method.

 Tel: 1-631-559-9269 1-516-512-3133

 Email: info@creative-biomart.com  Fax: 1-631-938-8127

 45-1 Ramsey Road, Shirley, NY 11967, USA



Purity	> 95% as determined by Tris-Bis PAGE; > 95% as determined by HPLC
Storage	Reconstituted protein stable at -80°C for 12 months, 4°C for 1 week. Use a manual defrost freezer and avoid repeated freeze-thaw cycles.
Reconstitution	Centrifuge tubes before opening. Reconstituting to a concentration more than 100 µg/ml is recommended. Dissolve the lyophilized protein in distilled water.
Conjugation	Biotin

GENE INFORMATION

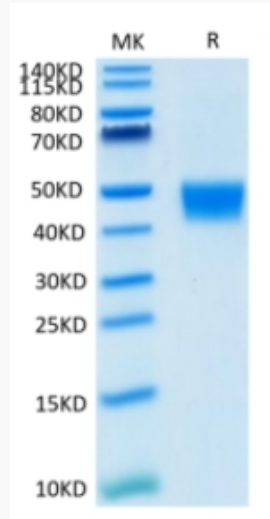
Gene Name	Msln mesothelin [Mus musculus]
Official Symbol	Msln
Synonyms	MSLN; mesothelin; megakaryocyte potentiating factor; pre-pro-megakaryocyte-potentiating factor; MPF;
Gene ID	56047
mRNA Refseq	NM_018857
Protein Refseq	NP_061345

 Tel: 1-631-559-9269 1-516-512-3133

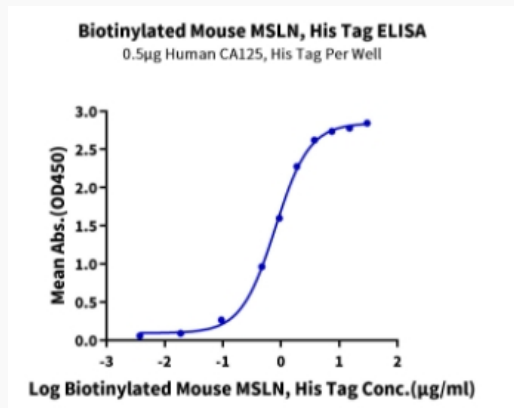
 Email: info@creative-biomart.com  Fax: 1-631-938-8127

 45-1 Ramsey Road, Shirley, NY 11967, USA

Tris-Bis PAGE



ELISA Data



 Tel: 1-631-559-9269 1-516-512-3133

 Email: info@creative-biomart.com  Fax: 1-631-938-8127

 45-1 Ramsey Road, Shirley, NY 11967, USA