

Recombinant Rat Mtus1 protein, His & T7-tagged

Cat. No. Mtus1-7967R Lot. No. (See product label)

SPECIFICATION

Product Overview	Recombinant Rat Mtus1 aa. (Met1~Ala196 (Accession # Q6IMY1)) fused with N-terminal His & T7 tag was produced in E. coli cells.
Species	Rat
Source	E.coli
ProteinLength	Met1~Ala196
Description	Human homolog is a mitochondrial protein that may be involved in regulation of cell proliferation.
Form	Freeze-dried powder
Molecular Mass	Predicted Molecular Mass: 26.1kDa.
Endotoxin	<1.0EU per 1ug (determined by the LAL method)
Purity	>95%
Characteristic	The isoelectric point is 8.6.
Applications	SDS-PAGE; WB; ELISA; IP.
Stability	The thermal stability is described by the loss rate of the target protein. The loss rate

 Tel: 1-631-559-9269 1-516-512-3133

 Email: info@creative-biomart.com  Fax: 1-631-938-8127

 45-1 Ramsey Road, Shirley, NY 11967, USA

was determined by accelerated thermal degradation test, that is, incubate the protein at 37°C for 48h, and no obvious degradation and precipitation were observed. (Referring from China Biological Products Standard, which was calculated by the Arrhenius equation.) The loss of this protein is less than 5% within the expiration date under appropriate storage condition.

Storage	Avoid repeated freeze/thaw cycles. Store at 2-8°C for one month. Aliquot and store at -80°C for 12 months.
Storage Buffer	Supplied as lyophilized form in 20mM Tris, 150mM NaCl, pH8.0, containing 1mM EDTA, 1mM DTT, 0.01% sarcosyl, 5% trehalose, and preservative.
Reconstitution	Reconstitute in sterile ddH ₂ O.

GENE INFORMATION

Gene Name	Mtus1 microtubule associated scaffold protein 1 [<i>Rattus norvegicus</i> (Norway rat)]
Official Symbol	Mtus1
Synonyms	Mtus1; microtubule associated scaffold protein 1; ATIP4; Mtsg1; Atip3b; microtubule-associated tumor suppressor 1 homolog; angiotensin-II type 2 receptor-interacting protein; growth factor inhibitor; microtubule associated tumor suppressor 1; mitochondrial tumor suppressor 1; transcription factor MTSG1
Gene ID	306487
mRNA Refseq	NM_178093.2
Protein Refseq	NP_835194.2

 Tel: 1-631-559-9269 1-516-512-3133

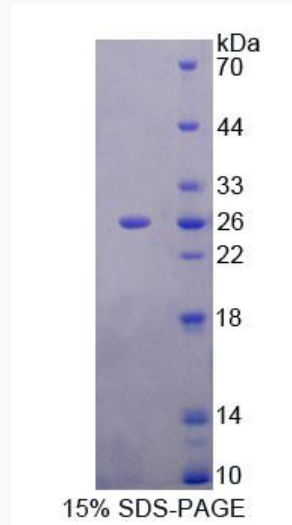
 Email: info@creative-biomart.com  Fax: 1-631-938-8127

 45-1 Ramsey Road, Shirley, NY 11967, USA

UniProt ID

Q6IMY1

SDS-PAGE



 Tel: 1-631-559-9269 1-516-512-3133

 Email: info@creative-biomart.com  Fax: 1-631-938-8127

 45-1 Ramsey Road, Shirley, NY 11967, USA