

## Recombinant Rat Mx1 protein, His & GST-tagged

**Cat. No.** Mx1-1888R    **Lot. No.** (See product label)

### SPECIFICATION

<b>Product Overview</b>	Recombinant Rat Mx1 aa. (Asn400~Asn652 (Accession # P18588)) fused with N-terminal His & GST tag was produced in E. coli cells.
<b>Species</b>	Rat
<b>Source</b>	E.coli
<b>ProteinLength</b>	Asn400~Asn652
<b>Description</b>	Mouse homolog is an interferon inducible gene that confers influenza resistance to mice.
<b>Form</b>	Freeze-dried powder
<b>Molecular Mass</b>	Predicted Molecular Mass: 57.1kDa
<b>Endotoxin</b>	<1.0EU per 1ug (determined by the LAL method)
<b>Purity</b>	>95%
<b>Applications</b>	SDS-PAGE; WB; ELISA; IP.
<b>Stability</b>	The thermal stability is described by the loss rate. The loss rate was determined by accelerated thermal degradation test, that is, incubate the protein at 37°C for 48h, and no obvious degradation and precipitation were observed. The loss rate is less

 Tel: 1-631-559-9269    1-516-512-3133

 Email: [info@creative-biomart.com](mailto:info@creative-biomart.com)     Fax: 1-631-938-8127

 45-1 Ramsey Road, Shirley, NY 11967, USA

than 5% within the expiration date under appropriate storage condition.

**Storage**

Avoid repeated freeze/thaw cycles. Store at 2-8°C for one month. Aliquot and store at -80°C for 12 months.

**Storage buffer**

Supplied as lyophilized form in PBS, pH7.4, containing 5% sucrose, 0.01% sarcosyl.

**Reconstitution**

Reconstitute in sterile PBS, pH7.2-pH7.4.

**Isoelectric Point**

8

## GENE INFORMATION

**Gene Name**

Mx1 myxovirus (influenza virus) resistance 1 [ *Rattus norvegicus* (Norway rat) ]

**Official Symbol**

Mx1

**Synonyms**

Mx1; myxovirus (influenza virus) resistance 1; IFI78; interferon-induced GTP-binding protein Mx1; Myxovirus (influenza) resistance, homolog of murine Mx (also interferon-inducible protein IFI78); myxoma resistance protein 1; myxovirus resistance protein 1

**Gene ID**

24575

**mRNA Refseq**

NM\_001271058.1

**Protein Refseq**

NP\_001257987.1

**UniProt ID**

P18588

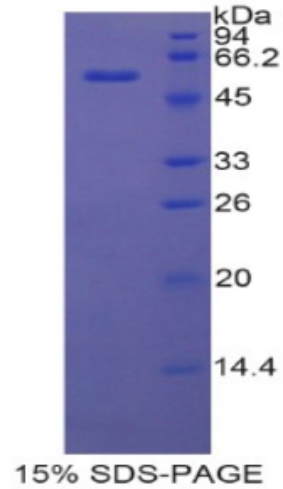
 Tel: 1-631-559-9269 1-516-512-3133

 Email: [info@creative-biomart.com](mailto:info@creative-biomart.com)  Fax: 1-631-938-8127

 45-1 Ramsey Road, Shirley, NY 11967, USA



SDS-PAGE



Tel: 1-631-559-9269 1-516-512-3133

Email: [info@creative-biomart.com](mailto:info@creative-biomart.com) Fax: 1-631-938-8127

45-1 Ramsey Road, Shirley, NY 11967, USA