

Recombinant Rat Mx1 protein, His & T7-tagged

Cat. No. Mx1-1889R **Lot. No.** (See product label)

SPECIFICATION

Product Overview	Recombinant Rat Mx1 aa. (Gly68~Leu303 (Accession # P18588)) fused with N-terminal His & T7 tag was produced in E. coli cells.
Species	Rat
Source	E.coli
ProteinLength	Gly68~Leu303
Description	Mouse homolog is an interferon inducible gene that confers influenza resistance to mice.
Form	Freeze-dried powder
Molecular Mass	Predicted Molecular Mass: 29.9kDa
Endotoxin	<1.0EU per 1ug (determined by the LAL method)
Purity	>95%
Applications	SDS-PAGE; WB; ELISA; IP.
Stability	The thermal stability is described by the loss rate. The loss rate was determined by accelerated thermal degradation test, that is, incubate the protein at 37°C for 48h, and no obvious degradation and precipitation were observed. The loss rate is less

 Tel: 1-631-559-9269 1-516-512-3133

 Email: info@creative-biomart.com  Fax: 1-631-938-8127

 45-1 Ramsey Road, Shirley, NY 11967, USA

than 5% within the expiration date under appropriate storage condition.

Storage

Avoid repeated freeze/thaw cycles. Store at 2-8°C for one month. Aliquot and store at -80°C for 12 months.

Storage buffer

Supplied as lyophilized form in PBS, pH7.4, containing 5% trehalose, 0.01% sarcosyl.

Reconstitution

Reconstitute in sterile PBS, pH7.2-pH7.4.

Isoelectric Point

8

GENE INFORMATION

Gene Name

Mx1 myxovirus (influenza virus) resistance 1 [*Rattus norvegicus* (Norway rat)]

Official Symbol

Mx1

Synonyms

Mx1; myxovirus (influenza virus) resistance 1; IFI78; interferon-induced GTP-binding protein Mx1; Myxovirus (influenza) resistance, homolog of murine Mx (also interferon-inducible protein IFI78); myxoma resistance protein 1; myxovirus resistance protein 1

Gene ID

24575

mRNA Refseq

NM_001271058.1

Protein Refseq

NP_001257987.1

UniProt ID

P18588

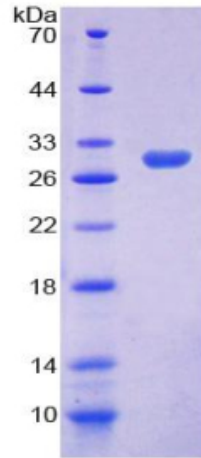
 Tel: 1-631-559-9269 1-516-512-3133

 Email: info@creative-biomart.com  Fax: 1-631-938-8127

 45-1 Ramsey Road, Shirley, NY 11967, USA



SDS-PAGE



Tel: 1-631-559-9269 1-516-512-3133

Email: info@creative-biomart.com Fax: 1-631-938-8127

45-1 Ramsey Road, Shirley, NY 11967, USA