

Recombinant Mouse Myh6 Protein, His-tagged

Cat. No. Myh6-2468M **Lot. No.** (See product label)

SPECIFICATION

Product Overview	Recombinant Mouse Myh6 Protein (Glu857-Ile1117) with a N-His tag was expressed in E. coli.
Species	Mouse
Source	E.coli
ProteinLength	Glu857-Ile1117
Description	Enables microfilament motor activity. Involved in cardiac muscle contraction. Acts upstream of or within several processes, including adult heart development; muscle cell development; and regulation of heart contraction. Located in Z disc and stress fiber. Part of myosin complex. Is expressed in several structures, including brown fat; embryo mesenchyme; great vessel of heart; heart; and skeletal musculature. Used to study dilated cardiomyopathy; dilated cardiomyopathy 1EE; and hypertrophic cardiomyopathy 14. Human ortholog(s) of this gene implicated in atrial heart septal defect (multiple); heart conduction disease (multiple); and intrinsic cardiomyopathy (multiple). Orthologous to human MYH6 (myosin heavy chain 6).
Form	Freeze-dried powder
Molecular Mass	Predicted Molecular Mass: 31.7 kDa Accurate Molecular Mass: 37 kDa
Endotoxin	<1.0 EU per 1g (determined by the LAL method).

 Tel: 1-631-559-9269 1-516-512-3133

 Email: info@creative-biomart.com  Fax: 1-631-938-8127

 45-1 Ramsey Road, Shirley, NY 11967, USA

Purity	> 90%
Applications	Positive Control; Immunogen; SDS-PAGE; WB.
Stability	The thermal stability is described by the loss rate. The loss rate was determined by accelerated thermal degradation test, that is, incubate the protein at 37 centigrade for 48h, and no obvious degradation and precipitation were observed. The loss rate is less than 5% within the expiration date under appropriate storage condition.
Storage	Avoid repeated freeze/thaw cycles. Store at 2-8 centigrade for one month. Aliquot and store at -80 centigrade for 12 months.
Storage Buffer	20mM Tris, 150mM NaCl, pH8.0, containing 1mM EDTA, 1mM DTT, 0.01% SKL, 5% Trehalose and Proclin300.
Reconstitution	Reconstitute in 20mM Tris, 150mM NaCl (pH8.0) to a concentration of 0.1-1.0 mg/mL. Do not vortex.

GENE INFORMATION

Gene Name	Myh6 myosin, heavy polypeptide 6, cardiac muscle, alpha [Mus musculus (house mouse)]
Official Symbol	Myh6
Synonyms	Myh6; myosin, heavy polypeptide 6, cardiac muscle, alpha; Myhca; Myhc-a; AA517445; alphaMHC; alpha-MHC; A830009F23Rik; myosin-6 alpha cardiac MHC alpha myosin cardiomyopathy, hypertrophic 1 myHC-alpha

 Tel: 1-631-559-9269 1-516-512-3133

 Email: info@creative-biomart.com  Fax: 1-631-938-8127

 45-1 Ramsey Road, Shirley, NY 11967, USA

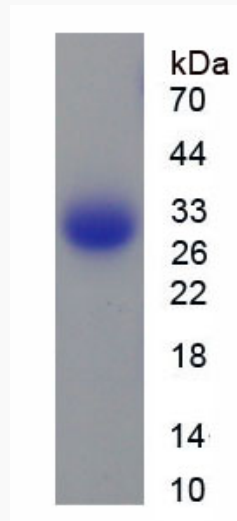
myosin heavy chain 6
myosin heavy chain, cardiac muscle, adult

Gene ID 17888

mRNA Refseq NM_010856

Protein Refseq NP_034986

UniProt ID Q02566



 Tel: 1-631-559-9269 1-516-512-3133

 Email: info@creative-biomart.com  Fax: 1-631-938-8127

 45-1 Ramsey Road, Shirley, NY 11967, USA