

## Recombinant Rat Myh6 protein, His-tagged

**Cat. No.** Myh6-8021R    **Lot. No.** (See product label)

### SPECIFICATION

<b>Product Overview</b>	Recombinant Rat Myh6 aa. (Glu856~Ile1116 (Accession # P02563)) fused with N-terminal His tag was produced in E. coli cells.
<b>Species</b>	Rat
<b>Source</b>	E.coli
<b>ProteinLength</b>	Glu856~Ile1116
<b>Description</b>	Heavy chain of myosin; involved in muscle contraction.
<b>Form</b>	Freeze-dried powder
<b>Molecular Mass</b>	32 kDa as determined by SDS-PAGE reducing conditions.
<b>Endotoxin</b>	<1.0EU per 1ug (determined by the LAL method)
<b>Purity</b>	>95%
<b>Characteristic</b>	The isoelectric point is 5.1.
<b>Applications</b>	SDS-PAGE; WB; ELISA; IP
<b>Stability</b>	The thermal stability is described by the loss rate of the target protein. The loss rate was determined by accelerated thermal degradation test, that is, incubate the protein

 Tel: 1-631-559-9269    1-516-512-3133

 Email: [info@creative-biomart.com](mailto:info@creative-biomart.com)     Fax: 1-631-938-8127

 45-1 Ramsey Road, Shirley, NY 11967, USA

at 37°C for 48h, and no obvious degradation and precipitation were observed. (Referring from China Biological Products Standard, which was calculated by the Arrhenius equation.) The loss of this protein is less than 5% within the expiration date under appropriate storage condition.

**Storage**

Avoid repeated freeze/thaw cycles. Store at 2-8°C for one month. Aliquot and store at -80°C for 12 months.

**Storage Buffer**

Supplied as liquid form in Phosphate buffered saline(PBS), pH 7.4.

**Reconstitution**

Reconstitute in sterile PBS, pH7.2-pH7.4.

## GENE INFORMATION

**Gene Name**

Myh6 myosin heavy chain 6 [ *Rattus norvegicus* (Norway rat) ]

**Official Symbol**

Myh6

**Synonyms**

Myh6; myosin heavy chain 6; Myhca; myosin-6; myHC-alpha; myosin heavy chain polypeptide 6 cardiac muscle adult; myosin heavy chain, cardiac muscle alpha isoform; myosin heavy chain, polypeptide 6, cardiac muscle, alpha; myosin, heavy chain 6, cardiac muscle, alpha; myosin, heavy polypeptide 6, cardiac muscle, alpha

**Gene ID**

29556

**mRNA Refseq**

NM\_017239.2

**Protein Refseq**

NP\_058935.2

**UniProt ID**

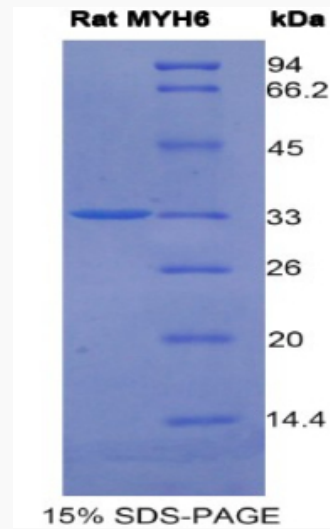
P02563

 Tel: 1-631-559-9269 1-516-512-3133

 Email: [info@creative-biomart.com](mailto:info@creative-biomart.com)  Fax: 1-631-938-8127

 45-1 Ramsey Road, Shirley, NY 11967, USA

SDS-PAGE



 Tel: 1-631-559-9269    1-516-512-3133

 Email: [info@creative-biomart.com](mailto:info@creative-biomart.com)     Fax: 1-631-938-8127

 45-1 Ramsey Road, Shirley, NY 11967, USA