

Recombinant Rat Myl1 protein, His-tagged

Cat. No. Myl1-1508R **Lot. No.** (See product label)

SPECIFICATION

Product Overview	Recombinant Rat Myl1 aa. (Phe3~Asn139 (Accession # P02600)) fused with N-terminal His tag was produced in E. coli cells.
Species	Rat
Source	E.coli
ProteinLength	Phe3~Asn139
Form	Freeze-dried powder
Molecular Mass	Predicted Molecular Mass: 16.3kDa.
Endotoxin	<1.0EU per 1g (determined by the LAL method).
Purity	>95%
Characteristic	The isoelectric point is 5.
Applications	SDS-PAGE; WB; ELISA; IP.
Stability	The thermal stability is described by the loss rate. The loss rate was determined by accelerated thermal degradation test, that is, incubate the protein at 37°C for 48h, and no obvious degradation and precipitation were observed. The loss rate is less than 5% within the expiration date under appropriate storage condition.

 Tel: 1-631-559-9269 1-516-512-3133

 Email: info@creative-biomart.com  Fax: 1-631-938-8127

 45-1 Ramsey Road, Shirley, NY 11967, USA

Storage	Avoid repeated freeze/thaw cycles. Store at 2-8°C for one month. Aliquot and store at -80°C for 12 months.
Storage buffer	Supplied as lyophilized form in PBS, pH7.4, containing 5% sucrose, 0.01% sarcosyl.
Reconstitution	Reconstitute in sterile PBS, pH7.2-pH7.4.
GENE INFORMATION	
Gene Name	MyI1 myosin, light chain 1 [<i>Rattus norvegicus</i> (Norway rat)]
Official Symbol	MyI1
Synonyms	MLCf; Mlc3; Mlc1; Mlc3; MLC-f; MLC3-f; MLC1/MLC3; MLC1F; MLC1F/MLC3F; MLC3F; alkali myosin light chain 1; alkali myosin light chain 3; fast myosin alkali light chain 1; fast myosin alkali light chain 3; myosin light chain 1, skeletal muscle isoform; myosin light chain 3, skeletal muscle isoform; myosin light chain A1/A2; myosin light chain alkali 1/2; myosin, light polypeptide 1; myosin light chain 1/3, skeletal muscle isoform
Gene ID	56781
mRNA Refseq	NM_001077656.1
Protein Refseq	NP_001071124.1
UniProt ID	P02600

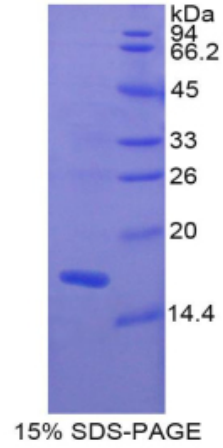
 Tel: 1-631-559-9269 1-516-512-3133

 Email: info@creative-biomart.com  Fax: 1-631-938-8127

 45-1 Ramsey Road, Shirley, NY 11967, USA



SDS-PAGE



Tel: 1-631-559-9269 1-516-512-3133

Email: info@creative-biomart.com Fax: 1-631-938-8127

45-1 Ramsey Road, Shirley, NY 11967, USA