

Recombinant Mouse Myo1a Protein, His-tagged

Cat. No. Myo1a-538M **Lot. No.** (See product label)

SPECIFICATION

Product Overview	Recombinant Mouse Myo1a(Met783~Arg1043) fused with His tag at N-terminal was expressed in E. coli.
Species	Mouse
Source	E.coli
ProteinLength	Met783~Arg1043
Description	Myo1a played an important role in many functions.
Form	PBS, pH7.4, containing 0.01% SKL, 1mM DTT, 5% Trehalose and Proclin300.
Molecular Mass	30.4kDa
Identity	Reconstitute in PBS or others
Endotoxin	<1.0EU per 1g (determined by the LAL method)
Purity	> 95%
Applications	Positive Control; Immunogen; SDS-PAGE; WB. If bio-activity of the protein is needed, please check active protein
Stability	The thermal stability is described by the loss rate. The loss rate was determined by

 Tel: 1-631-559-9269 1-516-512-3133

 Email: info@creative-biomart.com  Fax: 1-631-938-8127

 45-1 Ramsey Road, Shirley, NY 11967, USA

accelerated thermal degradation test, that is, incubate the protein at 37 centigrade for 48h, and no obvious degradation and precipitation were observed. The loss rate is less than 5% within the expiration date under appropriate storage condition.

Storage

Avoid repeated freeze/thaw cycles. Store at 2-8 centigrade for one month. Aliquot and store at -80 centigrade for 12 months.

Reconstitution

Reconstitute in PBS or others

GENE INFORMATION

Gene Name

[Myo1a myosin IA \[Mus musculus \]](#)

Official Symbol

[Myo1a](#)

Synonyms

MYO1A; myosin IA; unconventional myosin-1a; BBMI; MIHC; myosin-1a; myosin I heavy chain; brush border myosin 1; brush border myosin I; myosin, heavy polypeptide-like (110kD); Myh1; BBM-I;

Gene ID

[432516](#)

mRNA Refseq

[NM_001081219](#)

Protein Refseq

[NP_001074688](#)

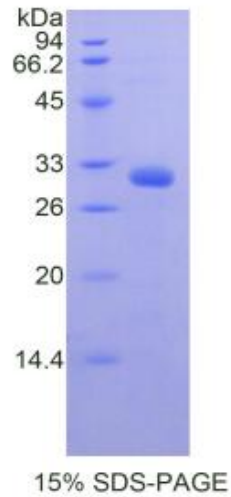
UniProt ID

[O88329](#)

 Tel: 1-631-559-9269 1-516-512-3133

 Email: info@creative-biomart.com  Fax: 1-631-938-8127

 45-1 Ramsey Road, Shirley, NY 11967, USA



 Tel: 1-631-559-9269 1-516-512-3133

 Email: info@creative-biomart.com  Fax: 1-631-938-8127

 45-1 Ramsey Road, Shirley, NY 11967, USA