

Recombinant SARS-CoV-2 N Protein (Met1-Ala419), N-His-SUMO tagged, Animal-free, Carrier-free

Cat. No. N-229S Lot. No. (See product label)

SPECIFICATION

Product Overview	Recombinant SARS-CoV-2 N Protein (Met1-Ala419) with N-His-SUMO tag was expressed in HEK293 and Animal-free as well as Carrier-free.
Species	SARS-CoV-2
Source	HEK293
ProteinLength	Met1-Ala419
Description	Coronaviruses (Delta B1.617.2 Variant) are enveloped positive-sense RNA viruses. Spike protein on the viral envelope and the cognate receptor on the surface of host cells that are essential for entry into host cells upon receptor binding and membrane fusion. Spike proteins are target for neutralization antibody, and mediate membrane fusion and virus entry. Trimeric spike protein is about 180kDa, and contains two subunits, S1 and S2, mediating attachment and membrane fusion.
Form	Lyophilized
Molecular Mass	The protein has a calculated MW of 57.17 kDa. The protein migrates as 63-75 kDa under reducing condition (SDS-PAGE analysis).
Purity	>98% as determined by SDS-PAGE analysis.
Storage	This product is stable after storage at:

 Tel: 1-631-559-9269 1-516-512-3133

 Email: info@creative-biomart.com  Fax: 1-631-938-8127

 45-1 Ramsey Road, Shirley, NY 11967, USA

-20 centigrade for 12 months in lyophilized state from date of receipt.
 -20 or -80 centigrade for 1 month under sterile conditions after reconstitution.
 Avoid repeated freeze/thaw cycles.

Storage Buffer Lyophilized from a 0.2 µm filtered solution of PBS, pH 7.4.

Reconstitution It is recommended to reconstitute the lyophilized protein in sterile H₂O to a concentration not less than 200 µg/mL and incubate the stock solution for at least 20 min to ensure sufficient re-dissolved.

Shipping The product is shipped with polar packs. Upon receipt, store it immediately at -20 centigrade or lower for long term storage.

GENE INFORMATION

Gene Name N nucleocapsid phosphoprotein [Severe acute respiratory syndrome coronavirus 2]

Official Symbol N

Synonyms N; nucleocapsid phosphoprotein; ORF9; structural protein

Gene ID 43740575

Protein Refseq YP_009724397

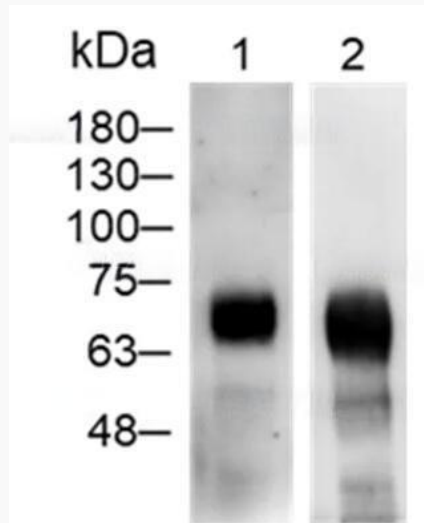
UniProt ID P0DTC9

 Tel: 1-631-559-9269 1-516-512-3133

 Email: info@creative-biomart.com  Fax: 1-631-938-8127

 45-1 Ramsey Road, Shirley, NY 11967, USA

WB

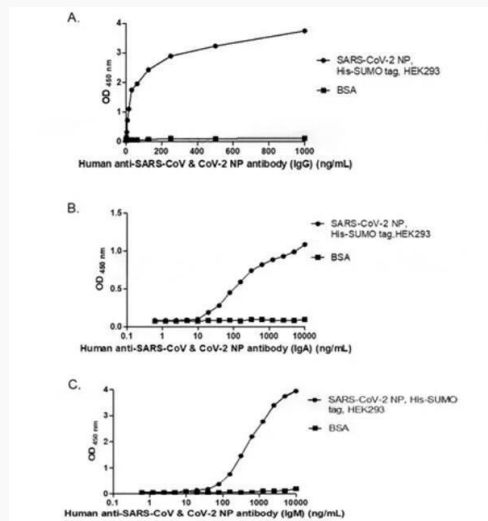


WB analysis of recombinant Human SARS-CoV-2 nucleocapsid protein.

Lane 1: Human anti-SARS-CoV & CoV-2 NP Antibody (IgG), 0.5 µg/mL (Leadgene cat. 17901)

Lane 2: Human anti-SARS-CoV & CoV-2 NP Antibody (IgM), 0.5 µg/mL (Leadgene cat. 18301)

ELISA



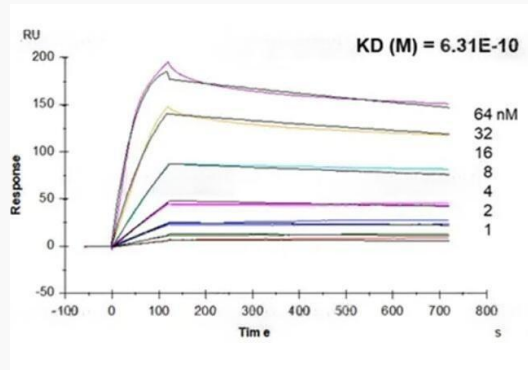
Tel: 1-631-559-9269 1-516-512-3133

Email: info@creative-biomart.com Fax: 1-631-938-8127

45-1 Ramsey Road, Shirley, NY 11967, USA

ELISA titration of Human anti-SARS-CoV & CoV-2 NP Antibody (A. IgG; B. IgA; C. IgM antibody).

Multi-cycle kinetic analysis of Human anti-SARS-CoV & CoV-2 NP Antibody (IgG) to Human SARS-CoV-2 Nucleocapsid protein by using Biacore T200.



 Tel: 1-631-559-9269 1-516-512-3133

 Email: info@creative-biomart.com  Fax: 1-631-938-8127

 45-1 Ramsey Road, Shirley, NY 11967, USA