

Recombinant HCoV-HKU1 N Protein, His-tagged(C-ter)

Cat. No. N-246H Lot. No. (See product label)

SPECIFICATION

Product Overview	Recombinant HCoV-HKU1 N Protein with His tag (C-ter) was expressed in E. coli.
Species	HCoV-HKU1
Source	E.coli
Description	Coronaviruses are named for the crown-like spikes on their surface. There are four main sub-groupings of coronaviruses, known as 229E (alpha coronavirus), NL63 (alpha coronavirus), OC43 (beta coronavirus), HKU1 (beta coronavirus).
Form	Powder
AA Sequence	MSYTPGHYAGSRSSSGNRSGILKKTSWADQSERNYQTFNRGRKTQPKFTVSTQPQ GNTIPHYSWFGITQFQKGRDFKFSDGQGVPVIAFGVPPSEAKGYWYRHSRRSFKTA DGQQKQLLPRWYFYLLGTGPYANASYGESLEGVFWVANHQADTSTPSDVSSRDPT TQEAIPTRFPPGTILPQGYVVEGSGRSASNSRPGSRSQSRGPNRSLSRNSNFRH SDSIVKPDMADEIANLVLAKLGKDSKPQQVTKQNAKEIRHKILTKPRQKRTPNKHCNV QQCFGKRGPSQNFNAEMKLGTNDPQFPILAEALPTPGAFFFGSKLDLVKRDSEA DSPVKDVFELHYSGSIRFDSTLPGFETIMKVLEENLNAYVNSNQNTSDSLSSKPQR KRGVKQLPEQFDSLNLNSAGTQHISNDFTPEDHSLLATLDDPYVEDSVA
Endotoxin	Endotoxin level is less than 0.1 EU/μg of the protein, as determined by the LAL test.
Purity	> 98% (by SDS-PAGE)

 Tel: 1-631-559-9269 1-516-512-3133

 Email: info@creative-biomart.com  Fax: 1-631-938-8127

 45-1 Ramsey Road, Shirley, NY 11967, USA

Applications	SDS-PAGE
Notes	For laboratory research only, not for drug, diagnostic or other use.
Storage	Lyophilized protein should be stored at -20°C. After reconstitution, aliquot and store at -20°C or -80°C for up to one month. Storage in frost free freezers is not recommended. Avoid repeated freeze/thaw cycles. Suggest spin the vial prior to opening.
Storage Buffer	PBS (pH 7.4)
Reconstitution	It is recommended to reconstitute the lyophilized protein in sterile water to a concentration not less than 100 µg/mL and incubate the stock solution for at least 20 min at room temperature to make sure the protein is dissolved completely.

GENE INFORMATION

Gene Name	N nucleocapsid phosphoprotein [Human coronavirus HKU1]
Official Symbol	N
Synonyms	N; nucleocapsid phosphoprotein; nucleocapsid phosphoprotein; ORF9; structural protein
Gene ID	3200423
Protein Refseq	YP_173242
UniProt ID	Q5MQC6

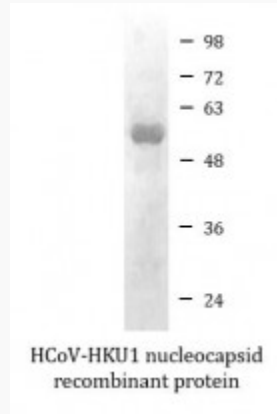
 Tel: 1-631-559-9269 1-516-512-3133

 Email: info@creative-biomart.com  Fax: 1-631-938-8127

 45-1 Ramsey Road, Shirley, NY 11967, USA



SDS-PAGE



Tel: 1-631-559-9269 1-516-512-3133

Email: info@creative-biomart.com Fax: 1-631-938-8127

45-1 Ramsey Road, Shirley, NY 11967, USA