

Recombinant HCoV-229E N Protein, His-tagged(C-ter)

Cat. No. N-253H Lot. No. (See product label)

SPECIFICATION

Product Overview	Recombinant HCoV-229E N Protein with His tag (C-ter) was expressed in E. coli.
Species	HCoV
Source	E.coli
Description	Coronaviruses are named for the crown-like spikes on their surface. There are four main sub-groupings of coronaviruses, known as 229E (alpha coronavirus), NL63 (alpha coronavirus), OC43 (beta coronavirus), HKU1 (beta coronavirus).
Form	Powder
AA Sequence	MATVKWADASEPQRGRQGRIPYSLYSPLLVDSEQPWKVIPRNLPINKKDKNKLIGY WNVQKRFRTRKGGKRVLDLSPKLHFYYLGTGPHKDAKFRERVEGVVWVAVDGAKTEP TGYGVRRKNSEPEIPHFNQKLPNGVTVVEEPDSRAPSRSQSRSQSRGRGESKPKQS RNPSSDRNHNSQDDIMKAVAAALKSLGFDKPQEKDKKSAKTGTPKPSRNQSPASS QTSAKSLARSQSSETKEQKHEMQKPRWKRQPNDVTSNVTQCFGPRDLDHNFSG AGVVANGVKAKGYQFAELVPSTAAMLFDSHIVSKESGNTVVLTFTTRVTPKDHPH LGKFLEELNAFTREMQQHPLLNPSTALEFNPSQTSPATAEPVRDEVSIETDIIDEVN
Endotoxin	Endotoxin level is less than 0.1 EU/μg of the protein, as determined by the LAL test.
Purity	> 98% (by SDS-PAGE)
Applications	SDS-PAGE

 Tel: 1-631-559-9269 1-516-512-3133

 Email: info@creative-biomart.com  Fax: 1-631-938-8127

 45-1 Ramsey Road, Shirley, NY 11967, USA

Notes	For laboratory research only, not for drug, diagnostic or other use.
Storage	Lyophilized protein should be stored at -20°C. After reconstitution, aliquot and store at -20°C or -80°C for up to one month. Storage in frost free freezers is not recommended. Avoid repeated freeze/thaw cycles. Suggest spin the vial prior to opening.
Storage Buffer	PBS (pH 7.4)
Reconstitution	It is recommended to reconstitute the lyophilized protein in sterile water to a concentration not less than 100 µg/mL and incubate the stock solution for at least 20 min at room temperature to make sure the protein is dissolved completely.

GENE INFORMATION

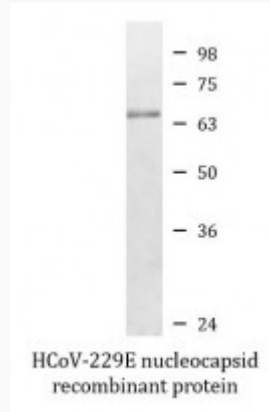
Gene Name	N nucleocapsid protein [Human coronavirus 229E]
Official Symbol	N
Synonyms	N; nucleocapsid protein; nucleocapsid protein; nucleoprotein
Gene ID	918763
Protein Refseq	NP_073556
UniProt ID	P15130

 Tel: 1-631-559-9269 1-516-512-3133

 Email: info@creative-biomart.com  Fax: 1-631-938-8127

 45-1 Ramsey Road, Shirley, NY 11967, USA

SDS-PAGE



 Tel: 1-631-559-9269 1-516-512-3133

 Email: info@creative-biomart.com  Fax: 1-631-938-8127

 45-1 Ramsey Road, Shirley, NY 11967, USA