

Recombinant Pan-species (General) N Protein, His-tagged

Cat. No. N-2766P Lot. No. (See product label)

SPECIFICATION

Product Overview	Recombinant Pan-species (General) NP Protein (LVPRGS+Met1-Ala419) with a N-His tag was expressed in 293F cell.
Species	Pan-species
Source	HEK293
ProteinLength	LVPRGS+Met1-Ala419
Description	Nucleoprotein, conjugated protein consisting of a protein linked to a nucleic acid, either DNA (deoxyribonucleic acid) or RNA (ribonucleic acid). The protein combined with DNA is commonly either histone or protamine; the resulting nucleoproteins are found in chromosomes.
Form	Freeze-dried powder
Molecular Mass	Predicted Molecular Mass: 49.3 kDa Accurate Molecular Mass: 60 kDa
Purity	> 90%
Stability	The thermal stability is described by the loss rate. The loss rate was determined by accelerated thermal degradation test, that is, incubate the protein at 37 centigrade for 48h, and no obvious degradation and precipitation were observed. The loss rate is less than 5% within the expiration date under appropriate storage condition.

 Tel: 1-631-559-9269 1-516-512-3133

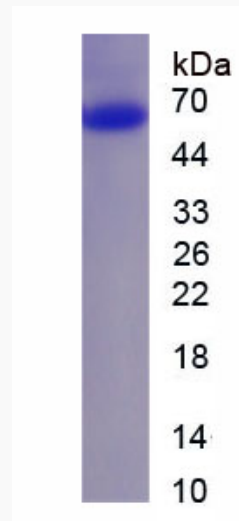
 Email: info@creative-biomart.com  Fax: 1-631-938-8127

 45-1 Ramsey Road, Shirley, NY 11967, USA

Storage	Avoid repeated freeze/thaw cycles. Store at 2-8 centigrade for one month. Aliquot and store at -80 centigrade for 12 months.
Storage Buffer	20mM Tris, 150mM NaCl, pH8.0, containing 1mM EDTA, 1mM DTT, 0.01% SKL, 5% Trehalose and Proclin300.
Reconstitution	Reconstitute in 20mM Tris, 150mM NaCl (pH8.0) to a concentration of 0.1-1.0 mg/mL. Do not vortex.

GENE INFORMATION

Official Symbol	NP
Synonyms	Nucleoprotein; NP; N Protein



 Tel: 1-631-559-9269 1-516-512-3133

 Email: info@creative-biomart.com  Fax: 1-631-938-8127

 45-1 Ramsey Road, Shirley, NY 11967, USA