

Recombinant SARS-CoV-2 N Protein, Avi/His-tagged

Cat. No. N-500S Lot. No. (See product label)

SPECIFICATION

Product Overview	SARS-CoV-2 nucleocapsid protein, also known as COVID-19 nucleocapsid and SARS-CoV-2 N protein, a.a. 1-419(end), with C-terminal Avi-His-tag, expressed in a HEK293 cell expression system.
Species	SARS-CoV-2
Source	HEK293
Description	<p>Severe acute respiratory syndrome coronavirus 2 (SARS-CoV-2) is an enveloped, positive-sense, single-stranded RNA virus that causes coronavirus disease 2019 (COVID-19). Virus particles include the RNA genetic material and structural proteins needed for invasion of host cells. Once inside the cell the infecting RNA is used to encode structural proteins that make up virus particles, nonstructural proteins that direct virus assembly, transcription, replication and host control and accessory proteins whose function has not been determined.~ The structural proteins of SARS-CoV-2 include the envelope protein (E), spike or surface glycoprotein (S), membrane protein (M) and the nucleocapsid protein (N). The nucleocapsid phosphoprotein is a structural protein that binds to, protects the viral RNA genome and is involved in packaging the RNA into virus particles. The N protein has been suggested as an antiviral drug target.</p>
Molecular Mass	48 kDa
Storage	At least 6 months at –80 centigrade.

 Tel: 1-631-559-9269 1-516-512-3133

 Email: info@creative-biomart.com  Fax: 1-631-938-8127

 45-1 Ramsey Road, Shirley, NY 11967, USA

Storage Buffer 40 mM Tris-HCl, pH 8, 110 mM NaCl, 2.2 mM KCl, 0.04% Tween-20, and 20% glycerol.

GENE INFORMATION

Gene Name N nucleocapsid phosphoprotein [Severe acute respiratory syndrome coronavirus 2]

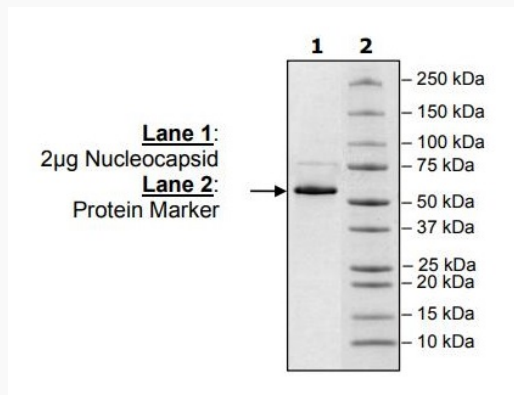
Official Symbol N

Synonyms SARS-CoV-2 N protein; Coronavirus NP; coronavirus Nucleocapsid; coronavirus Nucleoprotein; 2019-nCoV N protein Severe acute respiratory syndrome coronavirus 2 nucleocapsid; 100778-1; 100778-2; wild type; nucleocapsid phosphoprotein; ORF9; structural protein; N; nucleocapsid phosphoprotein

Gene ID 43740575

Protein Refseq YP_009724397

SDS-PAGE



Tel: 1-631-559-9269 1-516-512-3133

Email: info@creative-biomart.com Fax: 1-631-938-8127

45-1 Ramsey Road, Shirley, NY 11967, USA