

## Recombinant Human N4BP2L1 Protein, GST-Tagged

Cat. No. N4BP2L1-1315H Lot. No. (See product label)

### SPECIFICATION

<b>Product Overview</b>	Human CG018 full-length ORF (NP_001073159.1, 1 a.a. - 173 a.a.) recombinant protein with GST-tag at N-terminal.
<b>Species</b>	Human
<b>Source</b>	Wheat Germ
<b>Description</b>	N4BP2L1 (NEDD4 Binding Protein 2 Like 1) is a Protein Coding gene. GO annotations related to this gene include kinase activity. An important paralog of this gene is N4BP2.
<b>Molecular Mass</b>	47.1 kDa
<b>AA Sequence</b>	MEDSFLQSFGRSLQPPQQQQRQRPPRPPRGTTPRRHSFRKHLYLRLPLPGSGK TTLARQLQHDFPRALIFSTDDFFREDGAYEFNPDFLEEAHEWNQKRARKAMRNGI SPIIIDNTNLHAWEMKPYAVMVFQTEQKNLFRLEMDMVVFRPEMKKHSWCLKRKNP PNERTV
<b>Applications</b>	Enzyme-linked Immunoabsorbent Assay Western Blot (Recombinant protein) Antibody Production Protein Array
<b>Storage</b>	Store at -80 centigrade. Aliquot to avoid repeated freezing and thawing.

 Tel: 1-631-559-9269 1-516-512-3133

 Email: [info@creative-biomart.com](mailto:info@creative-biomart.com)  Fax: 1-631-938-8127

 45-1 Ramsey Road, Shirley, NY 11967, USA

**Storage Buffer** 50 mM Tris-HCl, 10 mM reduced Glutathione, pH=8.0 in the elution buffer.

## GENE INFORMATION

**Gene Name** N4BP2L1 NEDD4 binding protein 2-like 1 [ Homo sapiens ]

**Official Symbol** N4BP2L1

**Synonyms** CG018

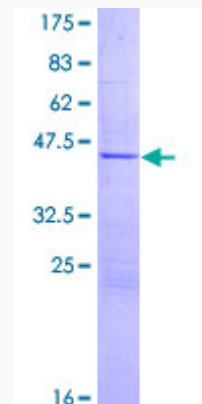
**Gene ID** 90634

**mRNA Refseq** NM\_052818

**Protein Refseq** NP\_438169

**UniProt ID** Q5TBK1

**Quality Control  
Testing**



12.5% SDS-PAGE Stained with Coomassie Blue.

 Tel: 1-631-559-9269 1-516-512-3133

 Email: [info@creative-biomart.com](mailto:info@creative-biomart.com)  Fax: 1-631-938-8127

 45-1 Ramsey Road, Shirley, NY 11967, USA