

Recombinant Human NAA40 Protein, Myc/DDK-tagged, C13 and N15-labeled

Cat. No. NAA40-5890H Lot. No. (See product label)

SPECIFICATION

Product Overview	NAA40 MS Standard C13 and N15-labeled recombinant protein (NP_079047) with a C-terminal MYC/DDK tag, was expressed in HEK293 cells.
Species	Human
Source	HEK293
Description	NAA40 (N-Alpha-Acetyltransferase 40, NatD Catalytic Subunit) is a Protein Coding gene. Diseases associated with NAA40 include Ogden Syndrome and Hepatocellular Carcinoma. Among its related pathways are Cytochrome P450 - arranged by substrate type. Gene Ontology (GO) annotations related to this gene include N-acetyltransferase activity.
Molecular Mass	27.2 kDa
AA Sequence	MGRKSSKAKEKKQKRLEERAAMDAVCAKVDAANRLGDPLEAFPVFKKYDRNGLNV SIECKRVSGLEPATVDWAFDLTKTNMQTMYEQSEWGWKDREKREEMTDDRAWYLI AWENSSVPVAFSHFRFDVECGDEVLYCYEVQLESKVRKGLGKFLIQILQLMANST QMKKVMLTVFKHNHGAYQFFREALQFEIDDSSPSMSGCCGEDCSYEILSRRTKFGD SHHSHAGGHCGGCCHTRTRPLEQKLISEEDLAANDILDYKDDDDKV
Purity	> 80% as determined by SDS-PAGE and Coomassie blue staining
Stability	Stable for 3 months from receipt of products under proper storage and handling

 Tel: 1-631-559-9269 1-516-512-3133

 Email: info@creative-biomart.com  Fax: 1-631-938-8127

 45-1 Ramsey Road, Shirley, NY 11967, USA

conditions.

Storage Store at -80 centigrade. Avoid repeated freeze-thaw cycles.

Concentration 50 µg/mL as determined by BCA

Storage Buffer 100 mM glycine, 25 mM Tris-HCl, pH 7.3.

GENE INFORMATION

Gene Name NAA40 N-alpha-acetyltransferase 40, NatD catalytic subunit [Homo sapiens (human)]

Official Symbol NAA40

Synonyms NAA40; N(alpha)-acetyltransferase 40, NatD catalytic subunit, homolog (S. cerevisiae); N acetyltransferase 11, N acetyltransferase 11 (GCN5 related, putative), NAT11; N-alpha-acetyltransferase 40; FLJ13848; natD catalytic subunit; N-alpha acetyl transferase 40; N-acetyltransferase 11 (GCN5-related, putative); N-alpha-acetyltransferase 40, NatD catalytic subunit; NAT11; PATT1;

Gene ID 79829

mRNA Refseq NM_024771

Protein Refseq NP_079047

UniProt ID Q86UY6

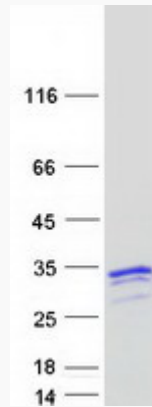
 Tel: 1-631-559-9269 1-516-512-3133

 Email: info@creative-biomart.com  Fax: 1-631-938-8127

 45-1 Ramsey Road, Shirley, NY 11967, USA



SDS-PAGE



Tel: 1-631-559-9269 1-516-512-3133

Email: info@creative-biomart.com Fax: 1-631-938-8127

45-1 Ramsey Road, Shirley, NY 11967, USA