

Recombinant Human NAA40 protein, GST-tagged

Cat. No. NAA40-7855H Lot. No. (See product label)

SPECIFICATION

Product Overview	Recombinant Human NAA40 protein(1-237 aa), fused with N-terminal GST tag, was expressed in E.coli.
Species	Human
Source	E.coli
ProteinLength	1-237 aa
Form	The purified protein was lyophilized from sterile phosphate-buffered saline (PBS: 58 mM Na ₂ HPO ₄ , 17 mM NaH ₂ PO ₄ , 68 mM NaCl, pH 8.0). Prior to lyophilization, 5% (w/v) trehalose and 5% (w/v) mannitol were incorporated as cryoprotective excipients. The protein was eluted with a buffer containing 100 mM reduced glutathione (GSH).
AASequence	MGRKSSKAKEKKQKRLEERAAMDAVCAKVDAANRLGDPLEAFPVFKKYDRNGLNV SIECKRVSGLEPATVDWAFDLTKTNMQTMYEQSEWGWKDREKREEMTDDRAWYLI AWENSSVPVAFSHFRFDVECGDEVLYCYEVQLESKVRKGLGKFLIQILQLMANST QMKKVMLTVFKHNHGAYQFFREALQFEIDDSSPSMSGCCGEDCSYEILSRRTKFGD SHSHAGGHCGGCCH
Purity	85%, by SDS-PAGE with Coomassie Brilliant Blue staining.
Storage	Store at 2-8°C for 1-2 weeks. Aliquot and store at -20°C to -80°C for up to 3 months, reconstitution with sterile water and addition of an equal volume of glycerol. Avoid

 Tel: 1-631-559-9269 1-516-512-3133

 Email: info@creative-biomart.com  Fax: 1-631-938-8127

 45-1 Ramsey Road, Shirley, NY 11967, USA

repeat freeze-thaw cycles.

Reconstitution

Dissolve the product in 200 µl sterile water to achieve a working concentration of 0.25 g/µl. If experimental compatibility allows, mix the aqueous solution with an equal volume of glycerol (1:1 ratio) after initial reconstitution.

GENE INFORMATION

Gene Name

NAA40 N(alpha)-acetyltransferase 40, NatD catalytic subunit, homolog (*S. cerevisiae*)
[*Homo sapiens*]

Official Symbol

NAA40

Synonyms

NAA40; N(alpha)-acetyltransferase 40, NatD catalytic subunit, homolog (*S. cerevisiae*); N acetyltransferase 11 , N acetyltransferase 11 (GCN5 related, putative) , NAT11; N-alpha-acetyltransferase 40; FLJ13848; natD catalytic subunit; N-alpha acetyl transferase 40; N-acetyltransferase 11 (GCN5-related, putative); N-alpha-acetyltransferase 40, NatD catalytic subunit; NAT11; PATT1;

Gene ID

79829

mRNA Refseq

NM_024771

Protein Refseq

NP_079047

UniProt ID

Q86UY6

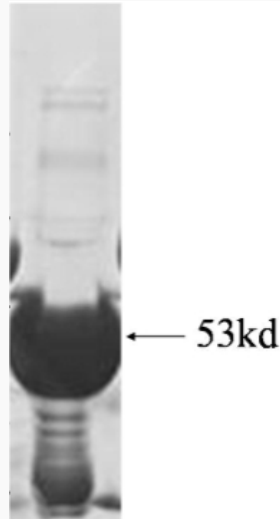
 Tel: 1-631-559-9269 1-516-512-3133

 Email: info@creative-biomart.com  Fax: 1-631-938-8127

 45-1 Ramsey Road, Shirley, NY 11967, USA



SDS-PAGE



☎ Tel: 1-631-559-9269 1-516-512-3133

☎ Email: info@creative-biomart.com ☎ Fax: 1-631-938-8127

☎ 45-1 Ramsey Road, Shirley, NY 11967, USA