

Recombinant Human NAA50 Protein, Myc/DDK-tagged, C13 and N15-labeled

Cat. No. NAA50-4182H Lot. No. (See product label)

SPECIFICATION

Product Overview	NAA50 MS Standard C13 and N15-labeled recombinant protein (NP_079422) with a C-terminal MYC/DDK tag, was expressed in HEK293 cells.
Species	Human
Source	HEK293
Description	NAA50 (N-Alpha-Acetyltransferase 50, NatE Catalytic Subunit) is a Protein Coding gene. Diseases associated with NAA50 include Ogden Syndrome and Neuropathy, Hereditary Sensory And Autonomic, Type Iia. Among its related pathways are Cytochrome P450 - arranged by substrate type. Gene Ontology (GO) annotations related to this gene include N-acetyltransferase activity and H4 histone acetyltransferase activity. An important paralog of this gene is NAA30.
Molecular Mass	19.4 kDa
AA Sequence	MKGSRIELGDVTPHNIKQLKRLNQVIFPVSYNDKFKVDVLEVGELAKLAYFNDAVGA VCCRVDHSQNQKRLYIMTLGCLAPYRRLGIGTKMLNHVLNICEKDGTFDNIYLHVQIS NESAIDFYRKFGFEIIEETKKNYYKRIEPADAHVLQKNLKVPSGQNADVQKTDNTRTRP LEQKLISEEDLAANDILDYKDDDDKV
Purity	> 80% as determined by SDS-PAGE and Coomassie blue staining
Stability	Stable for 3 months from receipt of products under proper storage and handling

 Tel: 1-631-559-9269 1-516-512-3133

 Email: info@creative-biomart.com  Fax: 1-631-938-8127

 45-1 Ramsey Road, Shirley, NY 11967, USA

conditions.

Storage Store at -80 centigrade. Avoid repeated freeze-thaw cycles.

Concentration 50 µg/mL as determined by BCA

Storage Buffer 100 mM glycine, 25 mM Tris-HCl, pH 7.3.

GENE INFORMATION

Gene Name [NAA50 N-alpha-acetyltransferase 50, NatE catalytic subunit \[Homo sapiens \(human\) \]](#)

Official Symbol [NAA50](#)

Synonyms NAA50; N(alpha)-acetyltransferase 50, NatE catalytic subunit; MAK3, Mak3 homolog (*S. cerevisiae*), N acetyltransferase 13, N acetyltransferase 13 (GCN5 related), NAT13; N-alpha-acetyltransferase 50; FLJ13194; NAT5; San; Mak3 homolog; separation anxiety; N-acetyltransferase 5; natE catalytic subunit; N-acetyltransferase san homolog; N-acetyltransferase 13 (GCN5-related); N-alpha-acetyltransferase 50, NatE catalytic subunit; SAN; MAK3; hSAN; NAT13; hNAT5;

Gene ID [80218](#)

mRNA Refseq [NM_025146](#)

Protein Refseq [NP_079422](#)

MIM [610834](#)

UniProt ID [Q9GZZ1](#)

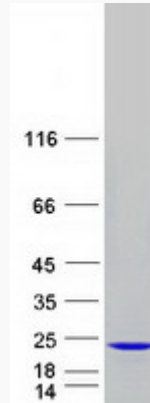
 Tel: 1-631-559-9269 1-516-512-3133

 Email: info@creative-biomart.com  Fax: 1-631-938-8127

 45-1 Ramsey Road, Shirley, NY 11967, USA



SDS-PAGE



Tel: 1-631-559-9269 1-516-512-3133

Email: info@creative-biomart.com Fax: 1-631-938-8127

45-1 Ramsey Road, Shirley, NY 11967, USA