

Recombinant Human NAALADL1 protein, His-tagged

Cat. No. NAALADL1-2315H Lot. No. (See product label)

SPECIFICATION

Product Overview	Recombinant Human NAALADL1 protein(NP_005459.2) (Pro 29-Leu 740) was expressed in HEK293, with a polyhistidine tag at the N-terminus.
Species	Human
Source	HEK293
ProteinLength	29-740 aa
Form	Lyophilized from sterile PBS, pH 7.4.
Molecular Mass	The recombinant human NAALADL1 comprises 728 amino acids and has a predicted molecular mass of 80 kDa. As a result of glycosylation, rh NAALADL1 migrates as an approximately 90 kDa band in SDS-PAGE under reducing conditions.
Endotoxin	< 1.0 EU per µg of the protein as determined by the LAL method.
Purity	> 97 % as determined by SDS-PAGE
Storage	Store it under sterile conditions at -20°C to -80°C upon receiving. Recommend to aliquot the protein into smaller quantities for optimal storage. Avoid repeated freeze-thaw cycles.
Reconstitution	It is recommended that sterile water be added to the vial to prepare a stock solution of 0.2 ug/ul. Centrifuge the vial at 4°C before opening to recover the entire contents.

 Tel: 1-631-559-9269 1-516-512-3133

 Email: info@creative-biomart.com  Fax: 1-631-938-8127

 45-1 Ramsey Road, Shirley, NY 11967, USA

protein Refseq-Weblink	http://www.ncbi.nlm.nih.gov/protein/NP_005459.2
Unit ID	Q9UQQ1
Unit ID-Weblink	https://www.uniprot.org/uniprotkb/Q9UQQ1

GENE INFORMATION

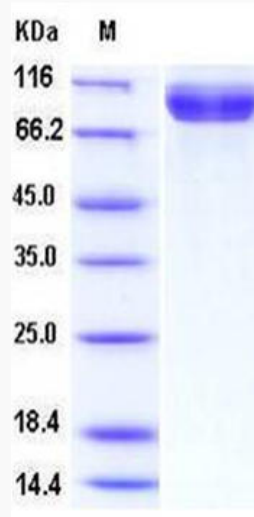
Gene Name	NAALADL1 N-acetylated alpha-linked acidic dipeptidase-like 1 [Homo sapiens]
Official Symbol	NAALADL1
Synonyms	NAALADL1; N-acetylated alpha-linked acidic dipeptidase-like 1; N-acetylated-alpha-linked acidic dipeptidase-like protein; ileal peptidase I100; NAALADase L; ileal dipeptidylpeptidase; 100 kDa ileum brush border membrane protein; I100; NAALADASEL;
Gene ID	10004
mRNA Refseq	NM_005468
protein Refseq	NP_005459
MIM	602640

 Tel: 1-631-559-9269 1-516-512-3133

 Email: info@creative-biomart.com  Fax: 1-631-938-8127

 45-1 Ramsey Road, Shirley, NY 11967, USA

SDS-PAGE



 Tel: 1-631-559-9269 1-516-512-3133

 Email: info@creative-biomart.com  Fax: 1-631-938-8127

 45-1 Ramsey Road, Shirley, NY 11967, USA