

Recombinant Human NAALADL2 Protein, His-SUMO-tagged

Cat. No. NAALADL2-1290H Lot. No. (See product label)

SPECIFICATION

Product Overview Recombinant Human NAALADL2 Protein (143-795aa) was expressed in E. coli with N-terminal His-SUMO tag.

Species Human

Source E.coli

ProteinLength 143-795 a.a.

Form Tris-based buffer, 50% glycerol.

Molecular Mass 88.6 kDa

AA Sequence

GYYVHTNCPSDAPSSGTVPQLYQEILKTIQAEDIKKSFRNLVQLYKNEDDMEISKKI
 KTQWTSGLGEDVQFVNYSVLLDLPGPSPSTVTLSSSGQCQFHPNGQPCSEEARKDSS
 QDLLYSYAAYSAGKTLKAEVIDVSYGMADDLKRIRKIKNVTNQIALLKLGKPLLYKLS
 SLEKAGFGGVLLYIDPCDLPKTVNPSHDTFMVSLNPGGDPSTPGYPSVDESEFRQSR
 SNLTSLLVQPISAPLVAKLISSPKARTKNEACSSLELPNNEIRVVSMQVQTVTKLKTVT
 NVVGFVMGLTSPDRYIIVGSHHHTAHSYNGQEWASSTAITAFIRALMSKVKRGWRP
 DRTIVFCSWGGTAFGNIGSYEWGEDFKKVLQKNVVAYISLHSPIRGNSSLYPVASPS
 LQQLVVEKNFNCTRRAQCPEPNISSIIQIQGDADYFINHLGVPIVQFAYEDIKTLEGPS
 FLSEARFSTRATKIEEMDPSFNLHETITKLSGEVILQIANEPVLPFNALDIALEVQNNLK
 GDQPNTHQLLAMALRLRESAELFQSDEMRPANDPKERAPIRIRMLNDILQDMEKSFL
 VKQAPPGFYRNILYHLDEKTSRFSILIEAWEHCKPLASNETLQEALSEVLNSINSAQV
 YFKAGLDVFKSVLDGKN

 Tel: 1-631-559-9269 1-516-512-3133

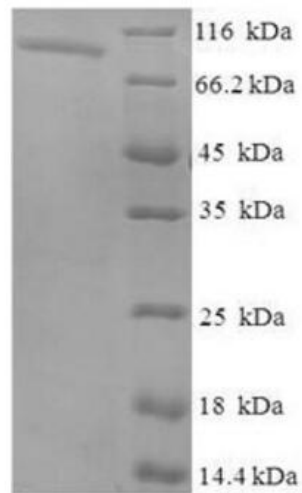
 Email: info@creative-biomart.com  Fax: 1-631-938-8127

 45-1 Ramsey Road, Shirley, NY 11967, USA

Purity	Greater than 90% as determined by SDS-PAGE.
Storage	The shelf life of liquid form is 6 months at -20 centigrade/-80 centigrade. The shelf life of lyophilized form is 12 months at -20 centigrade/-80 centigrade.

GENE INFORMATION

Gene Name	NAALADL2 N-acetylated alpha-linked acidic dipeptidase-like 2 [Homo sapiens]
Official Symbol	NAALADL2
Synonyms	NAALADL2; N-acetylated alpha-linked acidic dipeptidase-like 2; inactive N-acetylated-alpha-linked acidic dipeptidase-like protein 2; glutamate carboxypeptidase II type non peptidase homologue; NAALADase L2; N-acetylated alpha-linked acidic dipeptidase 2; glutamate carboxypeptidase II-type non-peptidase homologue
Gene ID	254827
mRNA Refseq	NM_207015
Protein Refseq	NP_996898
MIM	608806
UniProt ID	Q58DX5



Tel: 1-631-559-9269 1-516-512-3133

Email: info@creative-biomart.com Fax: 1-631-938-8127

45-1 Ramsey Road, Shirley, NY 11967, USA