

Recombinant Human NAALADL2 Protein (143-795 aa), His-tagged

Cat. No. NAALADL2-1671H Lot. No. (See product label)

SPECIFICATION

Product Overview Recombinant Human NAALADL2 Protein (143-795 aa) is produced by Yeast expression system. This protein is fused with a 6xHis tag at the N-terminal. Research Area: Cell Biology. Protein Description: Partial.

Species Human

Source Yeast

ProteinLength 143-795 aa

Form Tris-based buffer,50% glycerol

Molecular Mass 74.6 kDa

AA Sequence

```

GYVHTNCPSDAPSSGTVDPQLYQEILKTIQAEDIKKSFRNLVQLYKNEDDMEISKKI
KTQWTSGLGEDVQFVNYSVLLDLPGPSPSTVTLSSSGQCFFHPNGQPCSEEARKDSS
QDLLYSYAAYSAGKTLKAEVIDVSYGMADDLKRIRKIKNVTNQIALKLGKLPPLYKLS
SLEKAGFGGVLLYIDPCDLPKTVNPSHDTFMVSLNPGGDPSTPGYPSVDESFRQSR
SNLTSLLVQPISAPLVAKLISSPKARTKNEACSSLELPNNEIRVVSMQVQTVTKLKTVT
NVVGFVMGLTSPDRYIIVGSHHHTAHSYNGQEWASSTAITAFIRALMSKVKRGWRP
DRTIVFCSWGGTAFGNIGSYEWGEDFKKVLQKNVVAYISLHSPIRGNSSLYPVASPS
LQQLVVEKNFNCTRRAQCPEPNISSIIQIQGDADYFINHLGVPVIVQFAYEDIKTEGPS
FLSEARFSTRATKIEEMDPSFNLHETITKLSGEVILQIANEPVLPFNALDIALEVQNNLK
GDQPNTHQLLAMALRLRESAELFQSDEMRPANDPKERAPIRIRMLNDILQDMEKSFL
    
```

Tel: 1-631-559-9269 1-516-512-3133

Email: info@creative-biomart.com Fax: 1-631-938-8127

45-1 Ramsey Road, Shirley, NY 11967, USA

VKQAPPGFYRNILYHLDEKTSRFSILIEAWEHCKPLASNETLQEALSEVLNSINSAQV
YFKAGLDVFKSVLDGKN

Purity > 90% as determined by SDS-PAGE.

Notes Repeated freezing and thawing is not recommended. Store working aliquots at 4 centigrade for up to one week.

Storage The shelf life is related to many factors, storage state, buffer ingredients, storage temperature and the stability of the protein itself. Generally, the shelf life of liquid form is 6 months at -20 centigrade/-80 centigrade. The shelf life of lyophilized form is 12 months at -20 centigrade/-80 centigrade.

Concentration A hardcopy of COA with reconstitution instruction is sent along with the products.

GENE INFORMATION

Gene Name [NAALADL2 N-acetylated alpha-linked acidic dipeptidase-like 2 \[Homo sapiens \]](#)

Official Symbol [NAALADL2](#)

Synonyms NAALADL2; glutamate carboxypeptidase II-type non-peptidase homologue;

Gene ID [254827](#)

mRNA Refseq [NM_207015](#)

Protein Refseq [NP_996898](#)

MIM [608806](#)

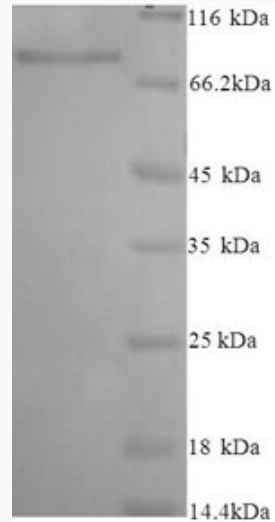
 Tel: 1-631-559-9269 1-516-512-3133

 Email: info@creative-biomart.com  Fax: 1-631-938-8127

 45-1 Ramsey Road, Shirley, NY 11967, USA

UniProt ID

Q58DX5



(Tris-Glycine gel) Discontinuous SDS-PAGE (reduced) with 5% enrichment gel and 15% separation gel.

 Tel: 1-631-559-9269 1-516-512-3133

 Email: info@creative-biomart.com  Fax: 1-631-938-8127

 45-1 Ramsey Road, Shirley, NY 11967, USA