

# Recombinant Human NACA Protein, Myc/DDK-tagged, C13 and N15-labeled

**Cat. No.** NACA-2536H    **Lot. No.** (See product label)

## SPECIFICATION

<b>Product Overview</b>	NACA MS Standard C13 and N15-labeled recombinant protein (NP_001106673) with a C-terminal MYC/DDK tag, was expressed in HEK293 cells.
<b>Species</b>	Human
<b>Source</b>	HEK293
<b>Description</b>	This gene encodes a protein that associates with basic transcription factor 3 (BTF3) to form the nascent polypeptide-associated complex (NAC). This complex binds to nascent proteins that lack a signal peptide motif as they emerge from the ribosome, blocking interaction with the signal recognition particle (SRP) and preventing mistranslocation to the endoplasmic reticulum. This protein is an IgE autoantigen in atopic dermatitis patients. Alternative splicing results in multiple transcript variants, but the full length nature of some of these variants, including those encoding very large proteins, has not been determined. There are multiple pseudogenes of this gene on different chromosomes.
<b>Molecular Mass</b>	23.2 kDa
<b>AA Sequence</b>	MPGEATETVPATEQELPQPQAETGSGTESDSDESVPLEEQDSTQATTQQAQLAA AAEIDEEPVSKAKQSRSEKKARKAMSKLGLRQVTGVTRVTIRKSKNILFVITKPDVYK SPASDTYIVFGEAKIEDLSQQAQLAAAEEKFKVQGEAVSNIQENTQTPTVQEESEEEE VDETGVEVKDIELVMSQANVSRKAVRALKNNSNDIVNAIMELTMTRTRPLEQKLISE

 Tel: 1-631-559-9269    1-516-512-3133

 Email: [info@creative-biomart.com](mailto:info@creative-biomart.com)     Fax: 1-631-938-8127

 45-1 Ramsey Road, Shirley, NY 11967, USA

EDLAANDILDYKDDDDKV

**Purity** > 80% as determined by SDS-PAGE and Coomassie blue staining

**Stability** Stable for 3 months from receipt of products under proper storage and handling conditions.

**Storage** Store at -80 centigrade. Avoid repeated freeze-thaw cycles.

**Concentration** 50 µg/mL as determined by BCA

**Storage Buffer** 100 mM glycine, 25 mM Tris-HCl, pH 7.3.

## GENE INFORMATION

**Gene Name** [NACA nascent polypeptide-associated complex alpha subunit \[ Homo sapiens \(human\) \]](#)

**Official Symbol** [NACA](#)

**Synonyms** NACA; nascent polypeptide-associated complex alpha subunit; nascent polypeptide associated complex alpha polypeptide; nascent polypeptide-associated complex subunit alpha; NACA1; NAC-alpha; alpha-NAC; nascent-polypeptide-associated complex alpha polypeptide; HSD48; MGC117224;

**Gene ID** [4666](#)

**mRNA Refseq** [NM\\_001113202](#)

**Protein Refseq** [NP\\_001106673](#)

 Tel: 1-631-559-9269 1-516-512-3133

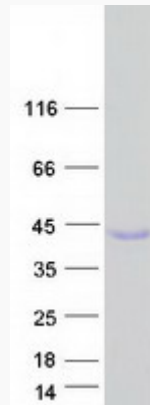
 Email: [info@creative-biomart.com](mailto:info@creative-biomart.com)  Fax: 1-631-938-8127

 45-1 Ramsey Road, Shirley, NY 11967, USA

**MIM** 601234

**UniProt ID** Q13765

**SDS-PAGE**



 Tel: 1-631-559-9269 1-516-512-3133

 Email: [info@creative-biomart.com](mailto:info@creative-biomart.com)  Fax: 1-631-938-8127

 45-1 Ramsey Road, Shirley, NY 11967, USA