

Recombinant Human NACA Protein, Myc/DDK-tagged, C13 and N15-labeled

Cat. No. NACA-4999H **Lot. No.** (See product label)

SPECIFICATION

Product Overview	NACA MS Standard C13 and N15-labeled recombinant protein (NP_005585) with a C-terminal MYC/DDK tag, was expressed in HEK293 cells.
Species	Human
Source	HEK293
Description	This gene encodes a protein that associates with basic transcription factor 3 (BTF3) to form the nascent polypeptide-associated complex (NAC). This complex binds to nascent proteins that lack a signal peptide motif as they emerge from the ribosome, blocking interaction with the signal recognition particle (SRP) and preventing mistranslocation to the endoplasmic reticulum. This protein is an IgE autoantigen in atopic dermatitis patients. Alternative splicing results in multiple transcript variants, but the full length nature of some of these variants, including those encoding very large proteins, has not been determined. There are multiple pseudogenes of this gene on different chromosomes.
Molecular Mass	23.4 kDa
AA Sequence	MPGEATETVPATEQELPQPQAETGSGTESDSDESVPLEEQDSTQATTQQAQLAA AAEIDEEPVSKAKQSRSEKKARKAMSKLGLRQVTGVTRVTIRKSKNILFVITKPDVYK SPASDTYIVFGEAKIEDLSQQAQLAAAEEKFKVQGEAVSNIQENTQTPTVQEESEEEE VDETGVEVKDIELVMSQANVSRKAVRALKNNSNDIVNAIMELTMTRTRPLEQKLISE

 Tel: 1-631-559-9269 1-516-512-3133

 Email: info@creative-biomart.com  Fax: 1-631-938-8127

 45-1 Ramsey Road, Shirley, NY 11967, USA

EDLAANDILDYKDDDDKV

Purity > 80% as determined by SDS-PAGE and Coomassie blue staining

Stability Stable for 3 months from receipt of products under proper storage and handling conditions.

Storage Store at -80 centigrade. Avoid repeated freeze-thaw cycles.

Concentration 50 µg/mL as determined by BCA

Storage Buffer 100 mM glycine, 25 mM Tris-HCl, pH 7.3.

GENE INFORMATION

Gene Name [NACA nascent polypeptide-associated complex alpha subunit \[Homo sapiens \(human\) \]](#)

Official Symbol [NACA](#)

Synonyms NACA; nascent polypeptide-associated complex alpha subunit; nascent polypeptide associated complex alpha polypeptide; nascent polypeptide-associated complex subunit alpha; NACA1; NAC-alpha; alpha-NAC; nascent-polypeptide-associated complex alpha polypeptide; HSD48; MGC117224;

Gene ID [4666](#)

mRNA Refseq [NM_005594](#)

Protein Refseq [NP_005585](#)

 Tel: 1-631-559-9269 1-516-512-3133

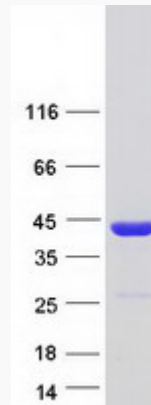
 Email: info@creative-biomart.com  Fax: 1-631-938-8127

 45-1 Ramsey Road, Shirley, NY 11967, USA

MIM 601234

UniProt ID Q13765

SDS-PAGE



 Tel: 1-631-559-9269 1-516-512-3133

 Email: info@creative-biomart.com  Fax: 1-631-938-8127

 45-1 Ramsey Road, Shirley, NY 11967, USA