

## Recombinant Human NAE1 Protein, His-tagged

Cat. No. NAE1-32H Lot. No. (See product label)

### SPECIFICATION

<b>Product Overview</b>	Recombinant human NAE1 (2-end) protein was expressed by baculovirus in Sf9 insect cells using an N-terminal His tag.
<b>Species</b>	Human
<b>Source</b>	Insect Cells
<b>ProteinLength</b>	2-end a.a.
<b>Description</b>	The protein encoded by this gene binds to the beta-amyloid precursor protein. Beta-amyloid precursor protein is a cell surface protein with signal-transducing properties, and it is thought to play a role in the pathogenesis of Alzheimer's disease. In addition, the encoded protein can form a heterodimer with UBE1C and bind and activate NEDD8, a ubiquitin-like protein. This protein is required for cell cycle progression through the S/M checkpoint. Three transcript variants encoding different isoforms have been found for this gene.
<b>Molecular Mass</b>	Approx 65 kDa
<b>Purity</b>	> 70%
<b>Stability</b>	One year at -70 centigrade from data of shipment.
<b>Storage</b>	Store product at -70 centigrade. For optimal storage, aliquot target into smaller quantities after centrifugation and store at recommended temperature. For most

 Tel: 1-631-559-9269 1-516-512-3133

 Email: [info@creative-biomart.com](mailto:info@creative-biomart.com)  Fax: 1-631-938-8127

 45-1 Ramsey Road, Shirley, NY 11967, USA

favorable performance, avoid repeated handling and multiple freeze/thaw cycles.

**Concentration** 0.2 µg/µL

**Storage Buffer** Recombinant protein stored in 50 mM sodium phosphate, pH 7.0, 300 mM NaCl, 150 mM imidazole, 0.25 mM DTT, 25% glycerol.

**Shipping** Dry ice

## GENE INFORMATION

**Gene Name** NAE1 NEDD8 activating enzyme E1 subunit 1 [ Homo sapiens (human) ]

**Official Symbol** NAE1

**Synonyms** NAE1; NEDD8 activating enzyme E1 subunit 1; HPP1; ula-1; APPBP1; A-116A10.1; NEDD8-activating enzyme E1 regulatory subunit; APP-BP1; NEDD8-activating enzyme E1 subunit; amyloid beta precursor protein binding protein 1, 59kDa; amyloid beta precursor protein-binding protein 1, 59 kDa; amyloid beta precursor protein-binding protein 1, 59kD; amyloid protein-binding protein 1; proto-oncogene protein 1; protooncogene protein 1

**Gene ID** 8883

**mRNA Refseq** NM\_003905

**Protein Refseq** NP\_003896

**MIM** 603385

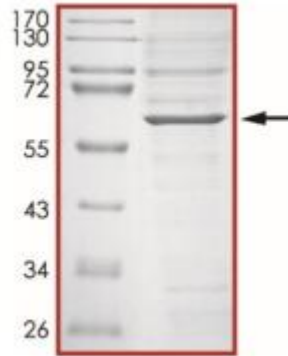
**UniProt ID** Q13564

 Tel: 1-631-559-9269 1-516-512-3133

 Email: [info@creative-biomart.com](mailto:info@creative-biomart.com)  Fax: 1-631-938-8127

 45-1 Ramsey Road, Shirley, NY 11967, USA

**Purity**



The purity of NAE1 was determined to be >70 % by densitometry.

 Tel: 1-631-559-9269 1-516-512-3133

 Email: [info@creative-biomart.com](mailto:info@creative-biomart.com)  Fax: 1-631-938-8127

 45-1 Ramsey Road, Shirley, NY 11967, USA